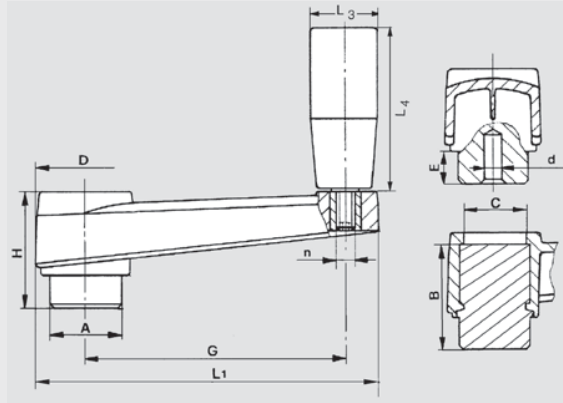


# MH-MEP | Plastic Crank Handles

Economical • With Pilot Bore



RoHS Compliant

## Crank body

Matte black, glass filled nylon plastic

Crank handles MH-MEP are of modern design.

Together with the zinc plated steel hub and plastic revolving handle with zinc plated steel spindle, this assembly is rust free.

6

## Hub

Steel, zinc plated, molded in

## Revolving handle

Black nylon plastic with zinc plated steel threaded spindle

Maximum heat resistance of nylon plastic crank body: 110°C (230°F).

Both dimensions, inch and metric, are interchangeable

Crank

## Metric Table

Dimensions in: millimeters (inches)

Part Number	G	L <sub>1</sub>	d Pilot Hole	A	D	H	E	B	C	L <sub>3</sub> Ø	L <sub>4</sub>	n Thread
6384020	65 (2.56)	87 (3.43)	4 (.157)	18 (.71)	27 (1.06)	33 (1.30)	10 (.39)	30 (1.18)	16 (.63)	21 (.83)	50 (1.97)	M6 x 1.0
6384030	80 (3.15)	105 (4.13)	4 (.157)	22 (.87)	30 (1.18)	36 (1.42)	10 (.39)	32 (1.26)	19 (.75)	21 (.83)	50 (1.97)	M6 x 1.0
6384040	100 (3.94)	128 (5.04)	4 (.157)	24 (.94)	34 (1.34)	40 (1.57)	10 (.39)	37 (1.46)	22 (.87)	23 (.91)	70 (2.76)	M8 x 1.25
6384050	130 (5.12)	162 (6.38)	6 (.236)	28 (1.10)	40 (1.57)	49 (1.93)	14 (.55)	44 (1.73)	25 (.98)	26 (1.02)	90 (3.54)	M8 x 1.25
6384060	160 (6.30)	196 (7.72)	6 (.236)	34 (1.34)	45 (1.77)	55 (2.17)	15 (.59)	49 (1.93)	28 (1.10)	26 (1.02)	90 (3.54)	M10 x 1.5