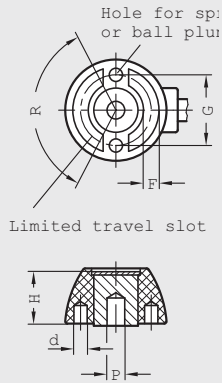
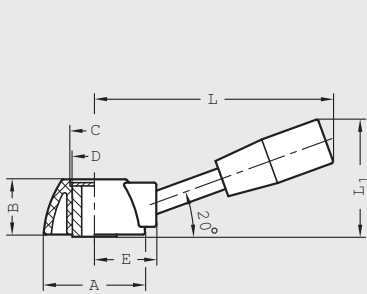


LM | Plastic Control Levers

Economical • Nylon Plastic • With Pilot Bore



2 Control Levers



RoHS Compliant

- Body**
Matte black, glass fiber reinforced nylon plastic
- Cover**
Self-adhesive matte anodized aluminum disk
- Hub**
Zinc-plated steel, molded in
- Arm**
Zinc-plated steel
- Hand piece**
Black phenolic plastic
- Both dimensions, inch and metric, are interchangeable

The unique shape of this control lever is suited to be used for most any control applications.

The disk cover hides fasteners and provides an area for printing of symbols or logos.

After assembly, the self adhesive disk cover is pressed in by hand.

Modifications such as metric and inch size bores, threads, keyways, etc. available upon request.

Maximum heat resistance of nylon plastic body: 110°C (230°F). Maximum heat resistance of phenolic hand piece: 150°C (300°F).

Metric Table

Dimensions in: millimeters (inches)

Part Number	A	P Pilot Bore	d	G	E	C	D	B	H	F	R	L	L ₁
6337100	46 (1.81)	8 (.315)	6 (.24)	32 (1.26)	28 (1.10)	22 (.87)	22 (.87)	25 (.98)	22 (.87)	7 (.28)	125°	108 (4.25)	53 (2.09)
6337200	56 (2.20)	10 (.394)	8 (.31)	39 (1.54)	34 (1.34)	28 (1.10)	26 (1.02)	30 (1.18)	27 (1.06)	9 (.35)	125°	127 (5.00)	60 (2.36)