

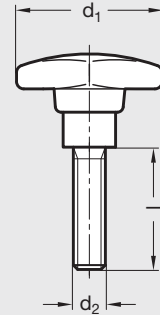


**GN 6335.4-TE | Star Knobs**

Metric Size • With Threaded Stud



<b>Hand Knob</b>	Matte black nylon plastic
<b>Hub and threaded Stud</b>	Zinc plated steel, molded-in
<b>Diameter <math>d_1</math></b>	1.26 – 2.48 inch (32 – 63 mm)
<b>Thread <math>d_2</math></b>	M6 – M12
<b>Length <math>l</math></b>	16 – 60 mm



ISO 9001 Supplier

RoHS Compliant

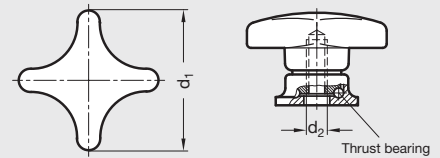


**GN 6335.9 | Star Knobs with Thrust Bearing**

Metric Size • Tapped Type



<b>Hand Knob</b>	Matte black nylon plastic
<b>Bearing</b>	Steel, black oxide finish
<b>Hub Insert</b>	
<b>Diameter <math>d_1</math></b>	1.57 – 3.15 inch (40 – 80 mm)
<b>Thread <math>d_2</math></b>	M6 – M12
	Doubled clamping force



ISO 9001 Supplier

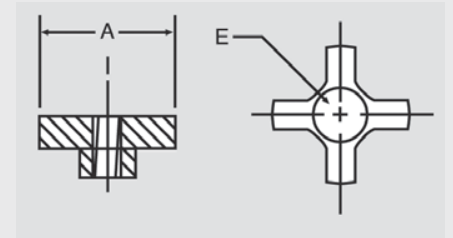
RoHS Compliant



**CKSQ | Quick Release Four Prong Hand Knobs**

Inch Size

<b>Hand Knob</b>	Aluminum, etched and clear anodized finish
<b>Diameter A</b>	1 – 2.5 inch (25.4 – 63.5 mm)
<b>Thread E</b>	1/4-20 – 1/2-13



ISO 9001 Supplier

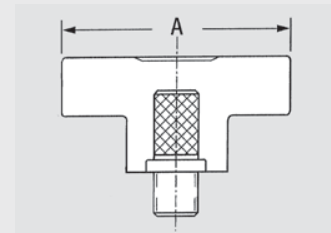
RoHS Compliant



**FPKS | Four-Prong Knobs**

Inch Size • With Threaded Stud

<b>Hand Knob</b>	Black phenolic plastic
<b>Threaded Stud</b>	Zinc plated steel, molded-in
<b>Diameter A</b>	1.25 – 3 inch (31.8 – 76.2 mm)
<b>Thread</b>	1/4-20 – 5/16-18
<b>Stud Length</b>	1 – 2.5 inch (25.4 – 63.5 mm)



RoHS Compliant