

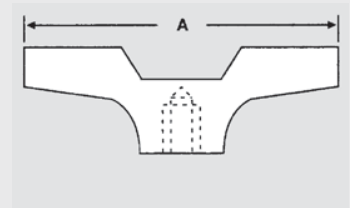
RoHS Compliant



WK | Wing Nuts

Inch Size • Tapped Insert Type

Wing Body	Black nylon plastic
Tapped Insert	Brass, molded-in
Diameter A	3 inch (76.2 mm)
Thread	1/4-20 – 3/8-16



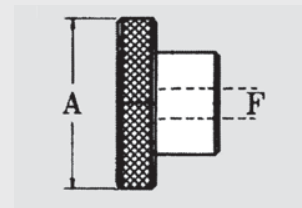
RoHS Compliant



KRSK | Knurled Rim Clamping Knobs

Inch Size • With Tapped Through Hole

Knob	Steel, black oxide finish
Diameter A	.75 – 3.0 inch (19.1 – 76.2 mm)
Thread F	10-24 – 3/4-10



RoHS Compliant

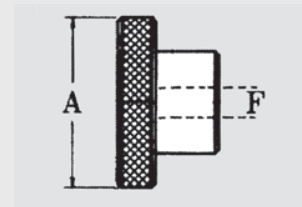


KRSK | Knurled Rim Clamping Knobs

Inch Size • With Tapped Through Hole



Knob	Stainless steel
Diameter A	.75 – 3.0 inch (19.1 – 76.2 mm)
Thread F	10-24 – 3/4-10



RoHS Compliant



KRSK | Knurled Rim Knobs

Inch Size • With Threaded Stud

Knob	Steel, black oxide finish
Diameter A	.75 – 2.5 inch (19.1 – 63.5 mm)
Thread F	10-24 – 5/8-11
Length E	.50 – 1.75

