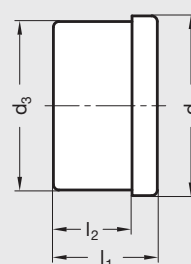
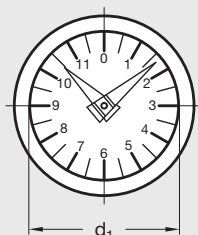


EN 000.8 | Plastic Position Indicators

Metric Size • For GN 323.8 Handwheels



ISO 9001 Supplier

RoHS Compliant

5

Handwheels

Housing

Glass fiber reinforced technopolymer plastic (Polyamide PA), matte black
Bearing surface "teflon" coated
Mating internal serrations hardened with nitrided surface treatment

Sight glass

Technopolymer plastic (Polyamide PA), transparent

Pointers

Plastic, long pointer red, short pointer black

Scale

Aluminum, matte anodized finish, with black graduation lines and numbers

EN 000.8 position indicators are suitable for installation in various types of handwheels, including GN 323.8, page 255.

Housing, hand spindles, and sight glass are all in one piece, welded ultrasonically. They are spray waterproof and corrosion proof (Protection class IP 67 according to DIN VDE 0470-1), oil and solvent proof (not suitable for alcohol).

The pendulum system is mounted on ball bearings for accurate display, and operational up to 140°F (60°C).

The reducing ratio shows the number of revolutions (long red hand) required per 1 complete revolution of the small hand.

Other reduction ratios available upon request in certain minimum quantities.

Glycerin-filled version, suitable for applications with strong vibrations, available upon request. For further details, see Complete Application Data for EN 000.8 Position Indicators, page 945.

Elesa Model GA11/GA12

Metric Table

Dimensions in: millimeters (*inches*)

Part Number		d ₁	Reduction Counting Gear	d ₂	d ₃	l ₁	l ₂
Numbers Ascending Clockwise	Numbers Ascending Counter-Clockwise						
110QAT2	110QAT3	42 (1.65)	10:1	49.8 (1.96)	48.2 (1.90)	30 (1.18)	23 (.91)
112QAT2	112QAT3		12:1				
120QAT2	120QAT3		20:1				
124QAT2	124QAT3		24:1				
130QAT2	130QAT3		30:1				
140QAT2	140QAT3		40:1				
106QAT4	106QAT5	60 (2.36)	6:1	68.5 (2.70)	67 (2.64)	32 (1.26)	25 (.98)
110QAT4	110QAT5		10:1				
112QAT4	112QAT5		12:1				
120QAT4	120QAT5		20:1				
124QAT4	124QAT5		24:1				
130QAT4	130QAT5		30:1				
136QAT4	136QAT5		36:1				