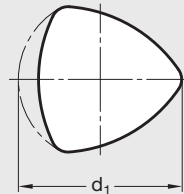
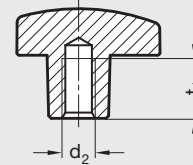
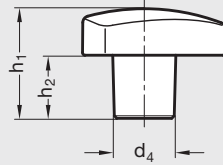


# GN 5339.5 | Stainless Steel Triangular Knobs

Inch and Metric Size • Threaded Blind Bore Type



NEW



ISO 9001 Supplier

RoHS Compliant

## Hand knob

Stainless steel, European Standard 1.4308, matte shot-blasted finish.

GN 5339.5 stainless steel triangular knobs were specially designed for use on machinery in the food industry. The smooth and enclosed areas as well as the corner radii comply with the requirements of hygiene standards. With an elegant ergonomical design, these knobs also withstand a relatively high torque.

Version with convex top and sides in highly polished finish available upon request in certain minimum quantities. Other modifications, such as inch or metric tapped holes, blind or through bores, cross holes or set screw holes, available upon request.

8

Clamping Knobs

## Inch Table

Dimensions in: inches (millimeters)

Part Number	d <sub>1</sub>	d <sub>2</sub> Thread	d <sub>4</sub>	h <sub>1</sub>	h <sub>2</sub>	t <sub>1</sub> min.
1TCZ0/EMT	1.26	10 – 32	.47	.83	.47	.39 (10)
3TCZ0/EMT	(32)	1/4 – 20	(12)	(21)	(12)	.47 (12)
3TCZ1/EMT	1.57	1/4 – 20	.55	1.02	.55	.47 (12)
5TCZ1/EMT	(40)	5/16 – 18	(14)	(26)	(44)	.59 (15)
5TCZ2/EMT	1.97	5/16 – 18	.71	1.30	.75	.59 (15)
6TCZ2/EMT	(50)	3/8 – 16	(18)	(33)	(19)	.63 (16)
6TCZ3/EMT	2.37	3/8 – 16	.79	1.61	.91	.71 (18)
8TCZ3/EMT	(60)	1/2 – 13	(20)	(41)	(23)	.87 (22)

## Metric Table

Dimensions in: millimeters (inches)

Part Number	d <sub>1</sub>	d <sub>2</sub> Thread	d <sub>4</sub>	h <sub>1</sub>	h <sub>2</sub>	t <sub>1</sub> min.
5NCZ0/EMT	32	M5 x .8	12	21	12	.10 (0.39)
6NCZ0/EMT	(1.26)	M6 x 1.0	(.47)	(.83)	(.47)	.12 (0.47)
6NCZ1/EMT	40	M6 x 1.0	14	26	14	.12 (0.47)
8NCZ1/EMT	(1.57)	M8 x 1.25	(.55)	(1.02)	(.55)	.15 (0.59)
8NCZ2/EMT	50	M8 x 1.25	18	33	19	.15 (0.59)
10NCZ2/EMT	(1.97)	M10 x 1.5	(.71)	(1.30)	(.75)	.16 (0.63)
10NCZ3/EMT	60	M10 x 1.5	20	41	23	.18 (0.71)
12NCZ3/EMT	(2.36)	M12 x 1.75	(.79)	(1.61)	(.91)	.22 (0.87)