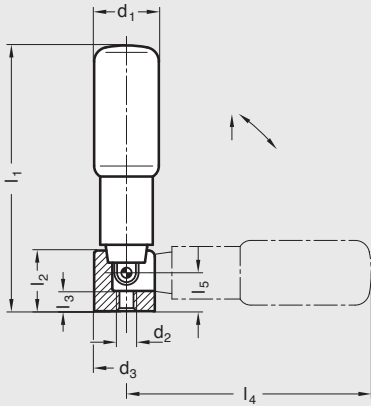


GN 798.3 | Stepped Retractable Handles

Metric Size • With Steel Locking Mechanism



ISO 9001 Supplier    RoHS Compliant

**Hand piece**  
Black nylon plastic, matte finish, revolving

**Spring loaded retractable mechanism**  
Steel, black oxide finish

Stepped retractable handles are noted for their modern design, and the stepped shape provides the operator with a better grip.

Retractable handles are suitable when the handle must be withdrawn during automatic operations. The handle is pulled out of its taper seating in the direction of the arrow and then tilted. A compression spring locks the handle in both end positions.

A positive lock is achieved in the operating position by way of a tapered seating.

Maximum heat resistance of nylon plastic hand piece: 90°C (194°F).

Metric Table

Dimensions in: millimeters (inches)

Part Number	d <sub>1</sub>	d <sub>2</sub> Thread	d <sub>3</sub>	l <sub>1</sub> ~	l <sub>2</sub>	l <sub>3</sub>	l <sub>4</sub> ~	l <sub>5</sub>
5NJ85	16 (.63)	M5 x .8	16 (.63)	58 (2.28)	15 (.59)	5 (.20)	52.5 (2.07)	9.5 (.37)
5NJ86	18 (.71)	M5 x .8	16 (.63)	72.5 (2.85)	15 (.59)	5 (.20)	67 (2.64)	9.5 (.37)
6NJ87	22 (.87)	M6 x 1.0	20 (.79)	80.5 (3.17)	19.5 (.77)	6 (.24)	74 (2.91)	10.5 (.41)
6NJ88	24 (.94)	M6 x 1.0	20 (.79)	95.5 (3.76)	19.5 (.77)	6 (.24)	89 (3.50)	10.5 (.41)
6NJ89	25 (.98)	M6 x 1.0	20 (.79)	105.5 (4.15)	19.5 (.77)	6 (.24)	98.5 (3.88)	10.5 (.41)