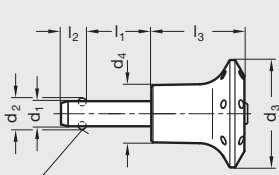
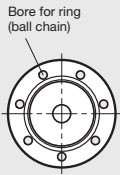
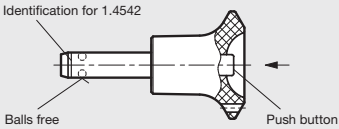


GN 113.6 | Heavy Duty Rapid Release Pins

Metric Size • With Stainless Steel Shank



Balls in locking position



ISO 9001 Supplier RoHS Compliant

Hand Grip

Nylon plastic

Release Pin Shaft

Stainless steel, European Standard No. 1.4542, precipitation hardened, hard coated

Ball

Stainless steel, European Standard No. 1.3541

Spring

Stainless steel, European Standard No. 1.4568

GN 113.6 rapid release pins are used for rapid connecting and securing of components or work pieces. They are useful for their compactness. A typical application is locating pins which have to be regularly moved in and out of position. By depressing the spring-loaded push button, the two balls are freed, and by releasing the push button the balls are locked.

GN 113.6 have an extreme load capacity, the pin is made of heavy duty, hardened and highly abrasion-resistant stainless steel.

Split ring GN 111, page 598, with various lengths of chain is available to prevent loss or misplacement of the ball lock pin. Maximum heat resistance for plastic handle of 80°C (175°F).

10

Indexing, Spring and Ball Plungers

Metric Table

Dimensions in: millimeters (inches)

Part Number	d ₁ -0.04 -0.008	l ₁ ±0.6	d ₂	d ₃	l ₂ ±0.2	Double Sided Shear Force in KN
5W10PAZ	5 (.20)	10	5.5 (.22)	30 (1.18)	6 (.24)	24
5W15PAZ		15				
5W20PAZ		20				
5W25PAZ		25				
5W30PAZ	6 (.24)	30	7 (.28)	30 (1.18)	7 (.28)	35
6W10PAZ		10				
6W15PAZ		15				
6W20PAZ		20				
6W25PAZ		25				
6W30PAZ		30				
6W35PAZ		35				
6W40PAZ		40				
6W45PAZ	8 (.31)	45	9.5 (.37)	35 (1.38)	8.2 (.32)	63
6W50PAZ		50				
8W20PAZ		20				
8W25PAZ		25				
8W30PAZ		30				
8W35PAZ		35				
8W40PAZ	8 (.31)	40	9.5 (.37)	35 (1.38)	8.2 (.32)	63
8W45PAZ		45				
8W50PAZ		50				

Table continued...



Dimensions in: millimeters (*inches*)

Part Number	d ₁ -0.04 -0.008	l ₁ ±0.6	d ₂	d ₃	l ₂ ±0.2	Double Sided Shear Force in KN
10W20PAZ	10 (.39)	20	12 (.47)	35 (1.38)	9.6 (.38)	100
10W25PAZ		25				
10W30PAZ		30				
10W35PAZ		35				
10W40PAZ		40				
10W45PAZ		45				
10W50PAZ		50				
10W60PAZ		60				
12W25PAZ	12 (.47)	25	14.5 (.57)	42 (1.65)	10.6 (.42)	144
12W30PAZ		30				
12W35PAZ		35				
12W40PAZ		40				
12W45PAZ		45				
12W50PAZ		50				
12W60PAZ		60				
12W70PAZ		70				
12W80PAZ		80				
16W30PAZ	16 (.63)	30	19 (.75)	42 (1.65)	14 (.55)	257
16W35PAZ		35				
16W40PAZ		40				
16W45PAZ		45				
16W50PAZ		50				
16W60PAZ		60				
16W70PAZ		70				
16W80PAZ		80				

Assembly Example

