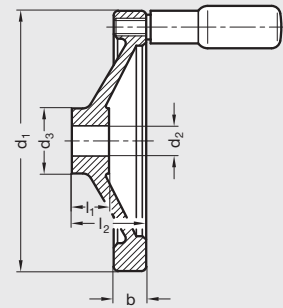
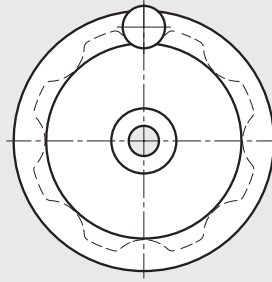


# GN 321 | Aluminum Solid Disk Handwheels

Inch and Metric Size • With or without Revolving Handle



ISO 9001 Supplier

RoHS Compliant

5

Handwheels

## Handwheel body

Aluminum, gravity die-cast

Contact face of hub machined

## Inner disk

Matte gray shot blasted satin finish

## Handwheel rim

Turned and highly polished on all sides

Rim is concentric and square to bore

## Revolving handle

Matte black nylon plastic hand piece with zinc plated steel threaded spindle, GN 798 series

No mounting hole in handwheel rim for handwheel without handle

Handle shipped loose; mounting of handle is required

Disk handwheels GN 321 are distinguished by modern design.

The highly polished rim and the shot blast finish does not, for most applications, require painting or other surface treatments.

Countersunk washers for handwheel retention, see GN 184, page 661.

Disk handwheels matte black plastic coated, GN 323, see page 224.

Special inch and metric bores available upon request.

Other modifications such as keyways, set screw holes, etc. available upon request.

## Inch Table

Dimensions in: inches (millimeters)

Part Number		d <sub>1</sub>	d <sub>2</sub> Through Bore	d <sub>3</sub>	b	l <sub>1</sub>	l <sub>2</sub> ≈	Handle Diameter	Handle Length	Handle Thread
With Handle	Without Handle									
3BF04/R	3BF04/A	3.15 (80)	.375	1.02 (26)	.51 (13)	.63 (16)	1.02 (26)	.71 (18)	1.63 (41.5)	M6 x 1.0
4BF04/R	4BF04/A		.500							
3BF05/R	3BF05/A	3.94 (100)	.375	1.10 (28)	.55 (14)	.67 (17)	1.18 (30)	.71 (18)	2.20 (56)	M6 x 1.0
4BF05/R	4BF05/A		.500							
4BF06/R	4BF06/A	4.92 (125)	.500	1.22 (31)	.59 (15)	.71 (18)	1.30 (33)	.87 (22)	2.23 (59)	M8 x 1.25
5BF07/R	5BF07/A	5.51 (140)	.625	1.42 (36)	.65 (16.5)	.75 (19)	1.42 (36)	.94 (24)	2.91 (74)	M8 x 1.25
4BF08/R	4BF08/A	6.30 (160)	.500	1.42 (36)	.71 (18)	.79 (20)	1.54 (39)	.94 (24)	2.91 (74)	M10 x 1.5
5BF08/R	5BF08/A		.625							
5BF09/R	5BF09/A	7.87 (200)	.625	1.77 (45)	.81 (20.5)	.94 (24)	1.77 (45)	.98 (25)	3.31 (84)	M10 x 1.5
6BF09/R	6BF09/A		.750							
6BF10/R	6BF10/A	9.84 (250)	.750	1.89 (48)	.91 (23)	1.10 (28)	2.01 (51)	.98 (25)	3.31 (84)	M10 x 1.5

**Metric Table**

Dimensions in: millimeters (*inches*)

Part Number		d <sub>1</sub>	d <sub>2</sub> Through Bore	d <sub>3</sub>	b	l <sub>1</sub>	l <sub>2</sub> ≈	Handle Diameter	Handle Length	Handle Thread
With Handle	Without Handle									
8MF04/R	8MF04/A	80 (3.15)	8	26 (1.02)	13 (.51)	16 (.63)	26 (1.02)	16 (.63)	41.5 (1.63)	M6 x 1.0
10MF04/R	10MF04/A		10							
12MF04/R	12MF04/A		12							
8MF05/R	8MF05/A	100 (3.94)	8	28 (1.10)	14 (.55)	17 (.67)	30 (1.18)	18 (.71)	56 (2.20)	M6 x 1.0
10MF05/R	10MF05/A		10							
12MF05/R	12MF05/A		12							
10MF06/R	10MF06/A	125 (4.92)	10	31 (1.22)	15 (.59)	18 (.71)	33 (1.30)	22 (.87)	59 (2.32)	M8 x 1.25
12MF06/R	12MF06/A		12							
14MF07/R	14MF07/A	140 (5.51)	14	36 (1.42)	16.5 (.65)	19 (.75)	36 (1.42)	24 (.94)	74 (2.91)	M8 x 1.25
12MF08/R	12MF08/A	160 (6.30)	12	36 (1.42)	18 (.71)	20 (.79)	39 (1.54)	24 (.94)	74 (2.91)	M10 x 1.5
14MF08/R	14MF08/A		14							
18MF09/R	18MF09/A	200 (7.87)	18	45 (1.77)	20.5 (.81)	24 (.94)	45 (1.77)	25 (.98)	84 (3.31)	M10 x 1.5
22MF10/R	22MF10/A	250 (9.84)	22	48 (1.89)	23 (.91)	28 (1.10)	51 (2.01)	25 (.98)	84 (3.31)	M10 x 1.5

