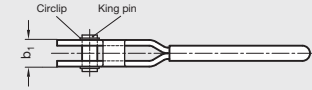
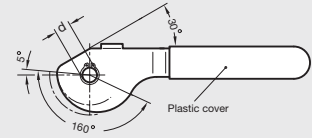




GN 917 | Double Cam Levers

Metric Size

Body	Steel, black oxide finish
Handle Sleeve	Red plastic
Diameter d	.31 – .47 inch (8 – 12 mm)
b₁	.51 – .79 inch (13 – 20 mm)

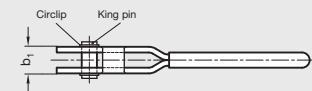
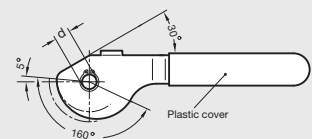


GN 917.1 | Double Cam Levers

Metric Size



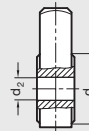
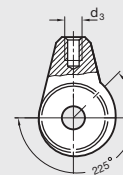
Body	Stainless steel
Handle Sleeve	Red plastic
Diameter d	.31 – .47 inch (8 – 12 mm)
b₁	.51 – .79 inch (13 – 20 mm)



GN 919 | Hubs with Eccentric Cam

Metric Size

Body	Steel, plain finish
Diameter d₁	.94 – 1.38 inch (24 – 35 mm)
Diameter d₂	.31 – .47 inch (8 – 12 mm)
Thread d₃	M6 – M10

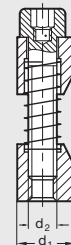


GN 928 | Shaft Clamping Units

Metric Size • For Round Shafts or Tubes



Body	Steel, black oxide finish
Diameter d₁	.31 – 1.18 inch (8 – 30 mm)
Thread d₂	M4 – M16
Diameter d₃	6 – 125 mm



Assembly instructions

