

Destaloradora de ruedas SERIE BB

10 toneladas Hidráulica

Destalora las llantas hidráulica-
mente entre 25" y 49"

DESTALORADORA DE RUEDAS

- Diseñada para encargarla en el alojamiento para la palanca.
- La presión hidráulica realiza todo el destaloramiento.
- Ligera y portátil.
- Se recomienda utilizarla con la bomba P55 y la manguera 9764 E.



HERRAMIENTAS HIDRÁULICAS

| Modelo herramienta | Peso herramienta kg. | Tamaño llanta | Capacidad cilindro | carrera (mm) |
|----------------------|----------------------|---|--------------------|--------------|
| BB-1600 | 10,25 | 25"-49" | 10 | 101,6 |
| BB1601 | 10,9 | 25"-49" Simple, dos, tres piezas de llanta | 10 | 101,6 |
| Consultar en fabrica | 13,65 | 25"-51" | 12,3 | 107,9 |



10 ton hydraulic Tire Removing Set

E Unscat tire beads hydraulically on 25"- 49" diameter earth mover rims with pry bar pockets in the bead seat band and rim back section.

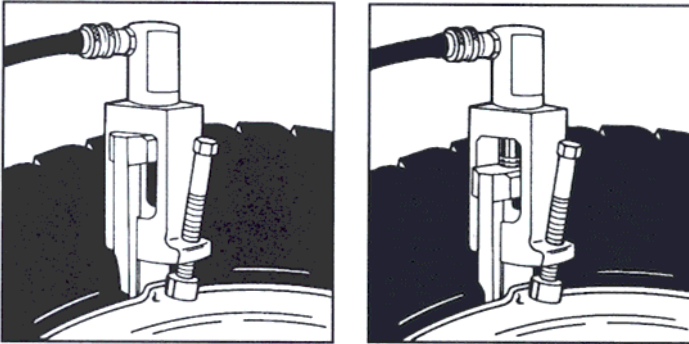
The No. BB-1 600 makes a tiring chore simple. Hydraulics make tire removal quick and easy without damaging the wheel or any component parts. At only 22112 pounds, it's complete portable, so it can be used with tires on or off the vehicle.

*see reverse side
for more information*

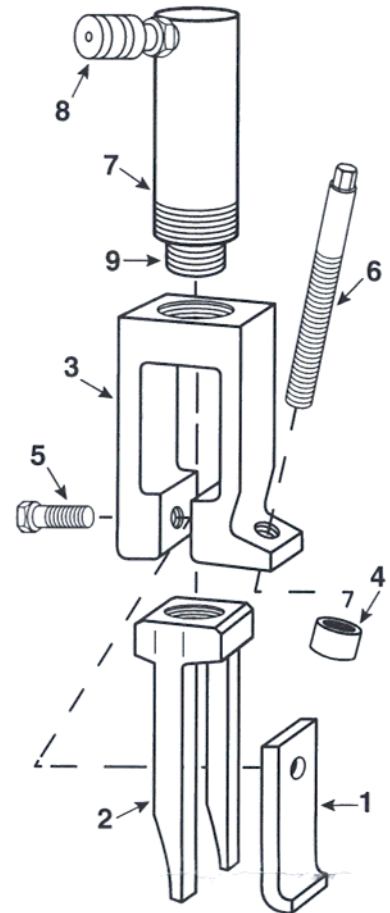


Demount tires on the vehicle

Using the BS-1 600 is easy. It's made to fit into a pry bar pocket to depress the flange about 3/14". Then it's placed under the lip of the bead seat band at points around the rim. Hydraulic pressure does all the unseating, quickly and easily. The entire BB-1 600 is light-weight (only 22112 lbs.) and portable, making it ideal for use in the shop or outside. It does not include the hydraulic pump, hose or hose half coupler (see below).



BB-1600 hook in one of the pry bar pockets. BB-1 600 depressing flange for tire removal.



WARNING

This bulletin is not intended for use as an instruction manual. To help prevent personal injury, ALWAYS CAREFULLY READ AND FOLLOW ALL INSTRUCTIONS. Complete instructions are included with every BB-1600.

Do not use any hydraulic pump which is capable of producing more than 10,000 p.s.i. hydraulic pressure. Components of the BB-1 600 or the wheel may be damaged.

How to order:

No. BB-1 600 - Hydraulic tire removing equipment. Includes parts shown at right. Wt., 22112 lbs.

It is recommended you use the BB-1600 with the POWER TEAM No. P55 hydraulic hand pump and the POWER TEAM No. 9764 6-ft. hose with hose half coupler.



Contents of set No. BB-1600

| POWER TEAM | | |
|------------|----------|------------------|
| Item No. | Part No. | Description |
| 1 | 36958 | Hook |
| 2 | 41086 | Clevis |
| 3 | 41084 | Frame |
| 4 | 202821 | Pressure Nut |
| 5 | 22469 | Shoulder Screw |
| 6 | 38809 | Set Screw |
| 7 | C102C | Ram |
| 8 | 9796 | Ram Coupler |
| 9 | 202179 | Threaded Adapter |



SPXFluidPower
5885 Jth ST
Rockford, IL 61109-3699 USA
Telephone: 1-815-874-5559 Fax: 1-815-874-7853 Customer
Service: 1-800-541-1418 Fax 1-800-288-7031
TechnicalServices: 1-800-477-8326 Fax.- 1-800-765-8326

DISTRIBUTED BY:



GRUPO PEGAMO DESDE 1982



SUMINISTRO INDUSTRIAL

En Pegamo Suministro Industrial llevamos desde 1982 vendiendo, alquilando y reparando Herramienta Hidráulica, Herramienta Neumática y Herramienta Manual de las principales marcas del mercado.

Te asesoramos para que encuentres la mejor solución a las necesidades de tu empresa.

CONTACTA CON NOSOTROS

Pol. Lintzirin Gaina, B2
20180 Oiartzun.
Gipuzkoa - Spain

suministros@pegamo.es
T. 943 491 788
F. 943 371 001