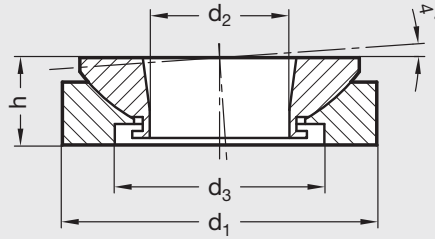


GN 350.3 / GN 350.3-NI | Spherical Leveling Washers

Metric Size • Steel or Stainless Steel



ISO 9001 Supplier

RoHS Compliant

Washers

Steel version – 1.7225 (42 CrMo 4V)

Stainless steel version –

European standard 1.4305

(American standard 303)

GN 350.3 spherical leveling washers were designed to match GN 350 and GN 350.1 leveling sets page 690.

The two spherical washers are used together and cannot be detached from each other.

The load bearing capacity of these spherical washers is relatively high. This is not only due to the material quality but also to the matched curve of the concave washer.

In addition, GN 6339 high strength washers are recommended for bridging d_2 .

High strength washer – GN 6339, page 658.

Spherical washers (male and female) – DIN 6319 C, page 6319 and DIN 6319 D, page 670.

Leveling sets, long model – GN 350, page 690.

Leveling sets, short model – GN 350.1, page 690.

Metric Table

Dimensions in: millimeters (*inches*)

Part Number		d_1	d_2	d_3 Min. Dimension	h	Max. Bolt Size	Static Load [kN]	
GN 350.3 Steel	GN 350.3-NI Stainless Steel						Steel	Stainless Steel
25WLA8	25WLA9	25 (.98)	8.5 (.33)	15 (.59)	8 (.31)	M6	40	27.1
32WLA8	32WLA9	32 (1.26)	13 (.51)	20 (.79)	10 (.39)	M10	65	43.4
45WLA8	45WLA9	45 (1.77)	20 (.79)	30 (1.18)	12.5 (.49)	M16	120	84
58WLA8	58WLA9	58 (2.28)	29 (1.14)	38 (1.50)	16 (.63)	M24	210	148
70WLA8	70WLA9	70 (2.76)	36 (1.42)	48 (1.89)	20 (.79)	M30	330	225
80WLA8	80WLA9	80 (3.15)	44 (1.73)	61 (2.40)	20 (.79)	M36	495	323