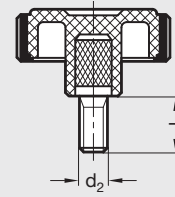
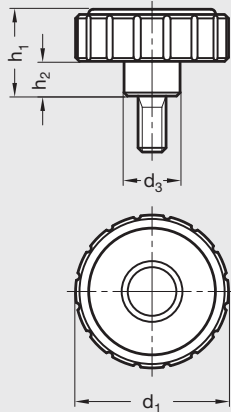


EN 4534 | Technopolymer Plastic Softline Knurled Knobs

Inch and Metric Size • With Threaded Stud



ISO 9001 Supplier

RoHS Compliant

Knob core

Technopolymer plastic (Polypropylene PP)

Knob rim

Soft elastomer plastic (TPE), 70 Shore A, chemically bonded to core
Black matte finish

Threaded stud

Steel, zinc plated, blue passivated

Elesa® original design Softline plastic knurled knobs.

The Softline rim on the contact surface of the knob makes it particularly ergonomic and user-friendly.

The soft and slip-free surface works well with moist hands, oily surfaces, or high or low temperatures.

In addition to the soft surface, this knob has a large rim area that helps distribute the operator's contact grip and allows for higher torque to be achieved.

The hard plastic core provides guaranteed and perfect weight bearing anchoring of the tapped insert.

These knobs can also be used for adjustment control (rotating knob).

Temperature resistant to 90°C (195°F).

Elesa Model MBT.p-SOFT

Inch Table

Dimensions in: inches (millimeters)

Part Number	d ₁	d ₂ Tapped	l Stud Length	d ₃	h ₁	h ₂
5TGB6	1.73 (44)	5/16 – 18	1.0	.67 (17)	.94 (24)	.39 (10)
6T126GB7	2.13 (54)	3/8 – 16	1.25	.79 (20)	1.18 (80)	.49 (12.5)

Metric Table

Dimensions in: millimeters (inches)

Part Number	d ₁	d ₂ Tapped	l Stud Length	d ₃	h ₁	h ₂
8N16GB6	44	M8 x 1.25	16	17 (.67)	24 (.94)	10 (.39)
8N30GB6	(1.73)		30			
10N20GB7	54	M10 x 1.5	20	20 (.79)	30 (1.18)	12.5 (.49)
10N30GB7	(2.13)		30			