



**EN 675 | Ergostyle® Plastic Soft Knobs**

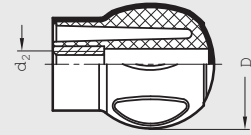
With Tapped Insert • Inch Size

**Knob Body** Special high impact strength technopolymer plastic, coated with a soft to the touch elastomer, black matte finish

**Tapped Insert** Brass, molded in

**Diameter D** 1.97 inch (50 mm)

**Diameter d<sub>2</sub>** 5/16-18 – 3/8-16



Elesa Model EBK

ISO 9001 Supplier

RoHS Compliant

4



**EN 675 | Ergostyle® Plastic Soft Knobs**

With Threaded Stud • Inch Size

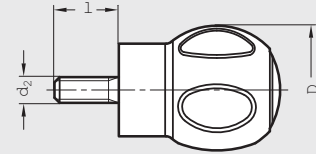
**Knob Body** Special high impact strength technopolymer plastic, coated with a soft to the touch elastomer, black matte finish

**Tapped Insert** Steel, zinc-plated, molded in

**Diameter D** 1.97 inch (50 mm)

**Diameter d<sub>2</sub>** 5/16-18 – 3/8-16

**Length l** .75 – 1.00 inch (19 – 25 mm)



Elesa Model EBK.p

ISO 9001 Supplier

RoHS Compliant

Revolving and Operating Handles



**EN 624 | Ergostyle® Plastic Soft Grip Knobs**

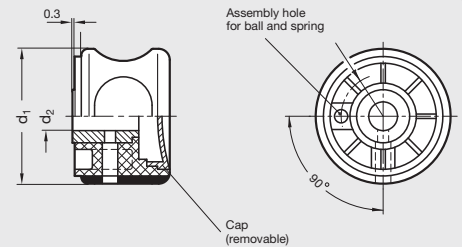
Metric Size

**Grip Knob** Technopolymer plastic

**Hub Insert** Steel, black oxide finish, molded in

**Diameter d<sub>1</sub>** 1.97 – 2.48 inch (50 – 63 mm)

**Diameter d<sub>2</sub>** .394 – .472 inch (10 – 12 mm)



Elesa Model EGK

ISO 9001 Supplier

RoHS Compliant