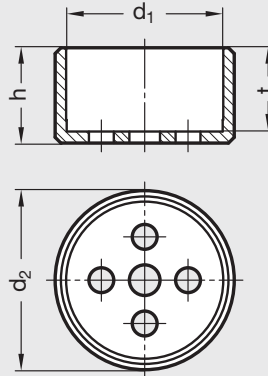


GN 187.1 | Steel Guide Housing

Metric Size



ISO 9001 Supplier

RoHS Compliant

Guide housing

Steel, black oxide finish

For use with GN 187 serrated locking plates, page 665.

Metric Table

Dimensions in: millimeters (*inches*)

Part Number	d ₁ +2mm/+3mm	d ₂ -5mm	h	t	For serrated locking plates GN 187 – d ₁
22WCBA	22 (.87)	26 (1.02)	14.5 (.57)	12.5 (.49)	22 (.87)
27WCBA	27 (1.06)	31 (1.22)	16.5 (.65)	14.5 (.57)	27 (1.06)
32WCBA	32 (1.26)	36 (1.42)	19.5 (.77)	17.5 (.69)	32 (1.26)
40WCBA	40 (1.57)	44 (1.73)	24.5 (.96)	22.5 (.88)	40 (1.57)

11