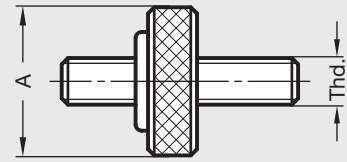




CN | Check Nuts

Inch Size

Body	Low carbon steel, black oxide finish
Thread	10-24 – 5/8-11
Diameter A	.75 – 1 inch (19.1 – 25.4 mm)



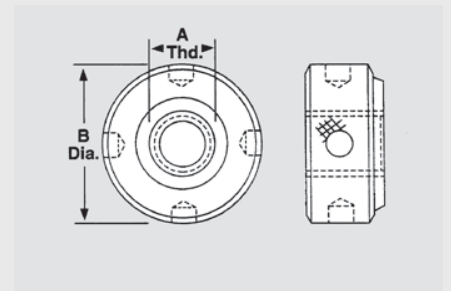
RoHS Compliant



KN | Knurled Nuts

Inch Size

Body	Low carbon steel, hardened
Thread A	3/8-16 – 5/8-11
Diameter B	1.13 – 1.38 inch (28.7 – 35.1 mm)



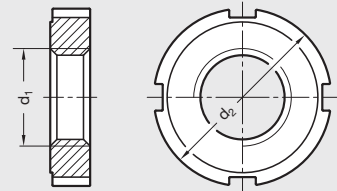
RoHS Compliant



DIN 1804 | Slotted Spanner Nuts

Metric Size

Body	Steel, hardened or unhardened
Thread d₁	M8 – M60
Diameter d₂	.79 – 3.54 inch (20 – 90 mm)



ISO 9001 Supplier

RoHS Compliant

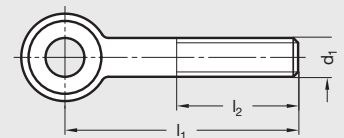


DIN 444-NI | Swing Bolts

Metric Size



Body	Stainless steel
Thread d₁	M6 – M16
Length l₁	50 – 130 mm
Length l₂	1.26 – 1.97 inch (32 – 50 mm)



ISO 9001 Supplier

RoHS Compliant