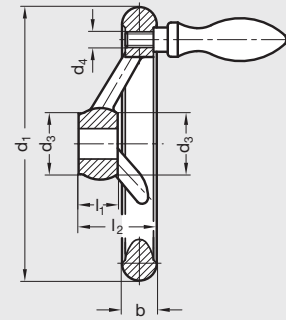
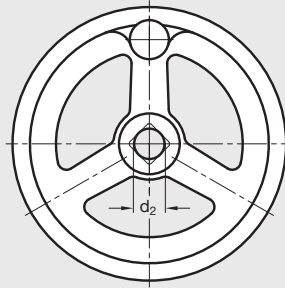


DIN 950-AL | Aluminum Spoked Handwheels

Inch and Metric Size • With or without Revolving Handle



ISO 9001 Supplier

RoHS Compliant

Handwheel body

Aluminum, gravity die-cast

Contact face of hub machined

Handwheel rim

Turned and highly polished

Rim is concentric and square to bore

Inner spokes

Matte gray, shot blasted satin finish

Revolving handle

Glass filled nylon plastic hand piece with black oxide finish steel stem, DIN 98-TP series, page 184.

No mounting hole in handwheel rim for handwheel without handle

Handle shipped loose; mounting of handle is required

Aluminum handwheels DIN 950-AL are supplied with revolving handles DIN 98, made of glass

fiber reinforced nylon plastic. Other DIN 98 revolving handles in aluminum or steel available upon request.

Countersunk washers for handwheel retention, see GN 184, page 661.

Special inch or metric bores larger than listed available upon request.

Other modifications such as keyways, set screw holes, etc. available upon request.

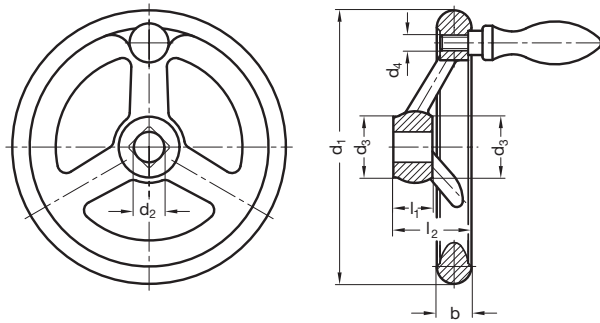
5

Handwheels

Inch Table

Dimensions in: inches (millimeters)

Part Number		d ₁	d ₂ Through Bore	d ₃	b	l ₁	l ₂	Handle Ø	Handle Length	d ₄	# of Spokes
With Handle	Without Handle										
4BE83/D	4BE83/A	3.15 (80)	.500	.94 (24)	.55 (14)	.63 (16)	1.14 (29)	.63 (16)	2.15 (54.5)	M6 x 1.0	3
4BE84/D	4BE84/A	3.94 (100)	.500	1.02 (26)	.59 (15)	.67 (17)	1.30 (33)	.63 (16)	2.15 (54.5)	M6 x 1.0	3
4BE85/D	4BE85/A	4.92 (125)	.500	1.10 (28)	.63 (16)	.71 (18)	1.42 (36)	.79 (20)	2.64 (67)	M8 x 1.25	3
5BE86/D	5BE86/A	5.51 (140)	.625	1.18 (30)	.67 (17)	.75 (19)	1.54 (39)	.79 (20)	2.64 (67)	M8 x 1.25	3
4BE87/D	4BE87/A	6.30 (160)	.500	1.30 (33)	.71 (18)	.79 (20)	1.57 (40)	.98 (25)	3.27 (83)	M10 x 1.5	3
5BE87/D	5BE87/A	6.30 (160)	.625	1.30 (33)	.71 (18)	.79 (20)	1.57 (40)	.98 (25)	3.27 (83)	M10 x 1.5	3
6BE89/D	6BE89/A	7.87 (200)	.750	1.50 (38)	.87 (22)	.94 (24)	1.77 (45)	.98 (25)	3.27 (83)	M10 x 1.5	3
7BE91/D	7BE91/A	9.84 (250)	.875	1.77 (45)	1.02 (26)	1.10 (28)	1.97 (50)	1.26 (32)	4.15 (105.5)	M12 x 1.75	5



Metric Table

Dimensions in: millimeters (inches)

Part Number		d ₁	d ₂ Through Bore	d ₃	b	l ₁	l ₂	Handle Ø	Handle Length	d ₄	# of Spokes
With Handle	Without Handle										
10ME83/D	10ME83/A	80 (3.15)	10	24 (.94)	14 (.55)	16 (.63)	29 (1.14)	16 (.63)	54.5 (2.15)	M6 x 1.0	3
12ME83/D	12ME83/A	80 (3.15)	12	24 (.94)	14 (.55)	16 (.63)	29 (1.14)	16 (.63)	54.5 (2.15)	M6 x 1.0	3
10ME84/D	10ME84/A	100 (3.94)	10	26 (1.02)	15 (.59)	17 (.67)	33 (1.30)	16 (.63)	54.5 (2.15)	M6 x 1.0	3
12ME84/D	12ME84/A	100 (3.94)	12	26 (1.02)	15 (.59)	17 (.67)	33 (1.30)	16 (.63)	54.5 (2.15)	M6 x 1.0	3
12ME85/D	12ME85/A	125 (4.92)	12	28 (1.10)	16 (.63)	18 (.71)	36 (1.42)	20 (.79)	67 (2.64)	M8 x 1.25	3
14ME86/D	14ME86/A	140 (5.51)	14	30 (1.18)	17 (.67)	19 (.75)	39 (1.54)	20 (.79)	67 (2.64)	M8 x 1.25	3
12ME87/D	12ME87/A	160 (6.30)	12	33 (1.30)	18 (.71)	20 (.79)	40 (1.57)	25 (.98)	83 (3.27)	M10 x 1.5	3
14ME87/D	14ME87/A	160 (6.30)	14	33 (1.30)	18 (.71)	20 (.79)	40 (1.57)	25 (.98)	83 (3.27)	M10 x 1.5	3
16ME88/D	16ME88/A	180 (7.09)	16	35 (1.38)	20 (.79)	22 (.87)	43 (1.69)	25 (.98)	83 (3.27)	M10 x 1.5	3
18ME89/D	18ME89/A	200 (7.87)	18	38 (1.50)	22 (.87)	24 (.94)	45 (1.77)	25 (.98)	83 (3.27)	M10 x 1.5	3
22ME91/D	22ME91/A	250 (9.84)	22	45 (1.77)	26 (1.02)	28 (1.10)	50 (1.97)	32 (1.26)	105.5 (4.15)	M12 x 1.75	5
26ME92/D	26ME92/A	315 (12.40)	26	53 (2.09)	28 (1.10)	33 (1.30)	56 (2.20)	32 (1.26)	105.5 (4.15)	M12 x 1.75	5
30ME93/D	30ME93/A	400 (15.75)	30	65 (2.56)	32 (1.26)	38 (1.50)	63 (2.48)	36 (1.42)	117 (4.61)	M12 x 1.75	5
34ME94/D	34ME94/A	500 (19.69)	34	78 (3.07)	34 (1.34)	45 (1.77)	72 (2.83)	36 (1.42)	117 (4.61)	M12 x 1.75	5

5

Handwheels