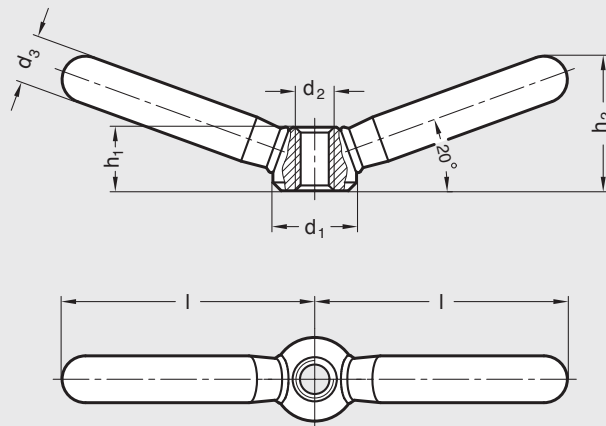


GN 99.7 | Steel Double Arm Clamp Nuts

Metric Size • With Tapped Through Holes



ISO 9001 Supplier

RoHS Compliant

Hub

Steel, matte shot-blasted finish
Clamp arms butt-welded to tapped hub

The latest production techniques make these parts extremely economical to use. Applications include boiler making and farm equipment, and special custom machinery.

Metric Table

Dimensions in: millimeters (*inches*)

Part Number	d_1	d_2 Tapped	d_3	h_1	h_2 ~	l ~
8NEN0	16 (.63)	M8 x 1.25	9 (.35)	12.5 (.49)	26 (1.02)	47.5 (1.87)
10NEN1	20 (.79)	M10 x 1.5	11 (.43)	15 (.59)	32 (1.26)	59.5 (2.34)
12NEN2	25 (.98)	M12 x 1.75	14 (.55)	19 (.75)	40 (1.57)	75.5 (2.97)
16NEN3	32 (1.26)	M16 x 2.0	18 (.71)	25 (.98)	52 (2.05)	94.5 (3.72)
20NEN4	40 (1.57)	M20 x 2.5	20 (.79)	31 (1.22)	62 (2.44)	118 (4.65)

2
Control Levers