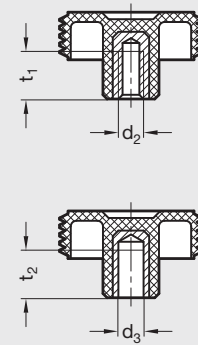
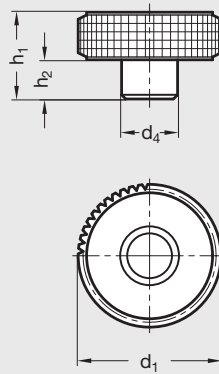


EN 534 | Technopolymer Plastic Diamond Cut Knurled Knobs

Inch and Metric Size • Tapped or Plain Blind Bore Insert



elesa®

ISO 9001 Supplier

RoHS Compliant

Knob body

Special glass-fiber reinforced technopolymer plastic, black matte finish

Insert

Brass, molded in, tapped or plain blind bore

Knobs with plain blind bore come complete with socket set screw for securing knob to shaft.

Elesa® original design technopolymer plastic diamond cut knurled knobs.

Outside rim has been designed with a truncated diamond knurl that provides a comfortable grip, and exercises maximum torque under the worst working conditions without causing operator fatigue.

The design of the fine diamond knurling simplifies grip adjustment of the knob during rapid rotation, thus providing the best control without requiring extreme angular adjustments of the hand and wrist.

Resistant to solvents, oils, grease and other chemical agents.

Elesa Model MBT

8

Clamping Knobs

Inch Table – Blind Tapped or Plain Blind Bore Insert

Dimensions in: inches (millimeters)

Part Number	d ₁	d ₂ Tapped	d ₃ Blind Bore	d ₄	h ₁	h ₂	t ₁ min.	t ₂ min.
3TAB6	1.26 (32)	1/4 – 20		.59 (15)	.87 (22)	.35 (9)	.47 (12)	–
3TAB7	1.57 (40)	1/4 – 20		.67 (17)	.94 (24)	.43 (11)	.47 (12)	–
5TAB7		5/16 – 18					.51 (13)	–
1BAB7			.250				–	.55 (14)
5TAB8	1.97 (50)	5/16 – 18		.79 (20)	1.18 (30)	.53 (13.5)	.71 (18)	–
6TAB8		3/8 – 16					.67 (17)	–
3BAB8			.375					–
6TAB9	2.36 (60)	3/8 – 16		.91 (23)	1.38 (35)	.59 (15)	.79 (20)	–
8TAB9		1/2 – 13					–	–
3BAB9			.375					–

Metric Table – Blind Tapped Insert

Dimensions in: millimeters (*inches*)

Part Number	d ₁	d ₂ Tapped	d ₄	h ₁	h ₂	t ₁ min.
5NAB6	32 (1.26)	M5 x .8	15 (.59)	22 (.87)	9 (.35)	10 (.39)
6NAB6		M6 x 1.0				12 (.47)
6NAB7	40 (1.57)	M6 x 1.0	17 (.67)	24 (.94)	11 (.43)	12 (.47)
8NAB7		M8 x 1.25				13 (.51)
8NAB8	50 (1.97)	M8 x 1.25	20 (.79)	30 (1.18)	13.5 (.53)	20 (.79)
10NAB8		M10 x 1.5				18 (.71)
10NAB9	60 (2.36)	M10 x 1.5	23 (.91)	35 (1.38)	15 (.59)	20 (.79)
12NAB9		M12 x 1.75				20 (.79)
12NAB0	70 (2.76)	M12 x 1.75	24 (.94)	38 (1.50)	18.5 (.73)	20 (.79)
14NAB0		M14 x 2.0				20 (.79)