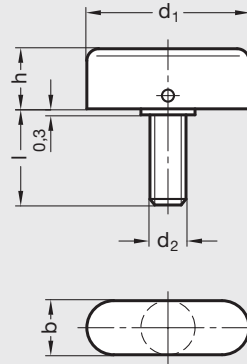


# GN 431 | Stainless Steel Wing Screws

Metric Size



ISO 9001 Supplier

RoHS Compliant

## Wing screw head

Stainless steel, powdered metal  
European standard 1.4404  
Threaded stud: Stainless steel  
European standard 1.4301

## Cross pin

Stainless steel  
European standard 1.4310  
Threaded stud is pressed into wing head and is secured by a dowel pin.

Where a greater torque is required GN 431 wing screws are a better solution than knurled screws.  
Stainless steel wing nuts, see GN 432, page 431.  
Stainless steel hand knobs, see GN 5334, page 398.

8

Clamping Knobs

## Metric Table

Dimensions in: millimeters (inches)

Part Number	d <sub>1</sub>	d <sub>2</sub> Thread	l Stud Length	b	h
6N16X17	25 (.98)	M6 x 1.0	16 (.63)	8 (.31)	10 (.39)
6N20X17			20 (.79)		
6N25X17			25 (.98)		
6N16X18	30 (1.18)	M6 x 1.0	16 (.63)	10 (.39)	12 (.47)
6N20X18			20 (.79)		
6N25X18			25 (.98)		
8N16X18	30 (1.18)	M8 x 1.25	16 (.63)	10 (.39)	12 (.47)
8N20X18			20 (.79)		
8N25X18			25 (.98)		
8N32X18			32 (1.26)		

Table continued...

**GN 431** | **Stainless Steel Wing Screws** | Metric Size

Dimensions in: millimeters (*inches*)

Part Number	d <sub>1</sub>	d <sub>2</sub> Thread	l Stud Length	b	h
8N16X19	36 (1.42)	M8 x 1.25	16 (.63)	12 (.47)	14.5 (.56)
8N20X19			20 (.79)		
8N25X19			25 (.98)		
8N32X19			32 (1.26)		
10N20X19		M10 x 1.5	20 (.79)		
10N30X19			30 (1.18)		
10N40X19			40 (1.57)		

