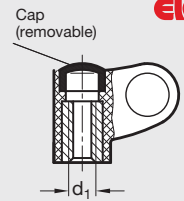
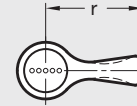




EN 635 | Ergostyle® Single Wing Nuts

Inch and Metric Size • With Tapped Insert

Wing Body	Technopolymer plastic
Insert	Brass, molded-in
Size r	1.09 – 1.38 inch (27.5 – 35 mm)
Thread d1	1/4-20 – 3/8-16 or M6 – M10



Elesa Model ESN

ISO 9001 Supplier

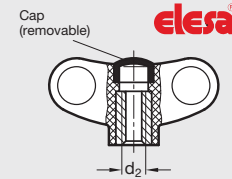
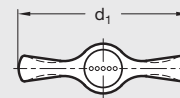
Call for RoHS



EN 634 | Ergostyle® Wing Screws

Inch Size • With Tapped Insert

Wing Body	Technopolymer plastic
Insert	Brass, molded-in
Diameter d1	1.85 – 2.76 inch (47 – 70 mm)
Thread d2	1/4-20 – 3/8-16



Elesa Model EWN

ISO 9001 Supplier

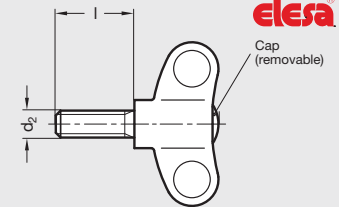
Call for RoHS



EN 633 | Ergostyle® Wing Screws

Inch Size • Threaded Stud Type

Wing Body	Technopolymer plastic
Threaded Stud	Steel, zinc-plated
Diameter d1	1.85 – 2.76 inch (47 – 70 mm)
Thread d2	1/4-20 – 3/8-16
Length l	.75 – 1.5



Elesa Model EWN.p

ISO 9001 Supplier

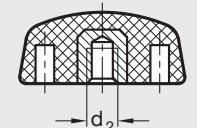
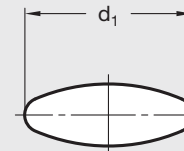
Call for RoHS



EN 532 | Wing Knobs

Inch and Metric Size • With Blind Tapped or Tapped Through Insert

Knob Body	Technopolymer plastic
Insert	Brass, molded-in
Diameter d1	1.02 – 1.57 inch (26 – 40 mm)
Thread d2	10-32 – 5/16-18 or M5 – M8



Elesa Model CT.476, CT.476 FP

ISO 9001 Supplier

RoHS Compliant