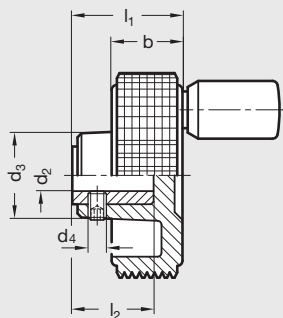
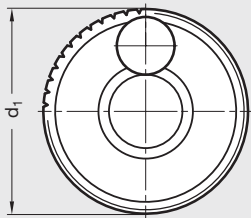


EN 735 | Plastic Knurled Control Handwheels  
With Revolving Handle



ISO 9001 Supplier

RoHS Compliant

**Body and revolving handle**  
Thermoplast (Polypropylene PP), reinforced,  
shock resistant, matte black

**Insert**  
Brass, molded in

Set screw DIN 916 with internal hexagon and  
serrated point  
Both dimensions, inch and metric, are  
interchangeable

EN 735 control handwheels are used for  
controlled adjustments on specific operations  
requiring low torque only.  
Coarse adjustment can be achieved via the  
revolving knob (provided that the use of fingers  
is acceptable considering safety factors). Fine  
adjustment is performed by using the rim of the  
wheel. The surface of the rim is knurled, which  
gives the handwheel an appealing finish.  
Modifications such as larger than listed metric or  
inch size bores available upon request.

Elesa Model MBT+I

Metric Table

Dimensions in: millimeters (inches)

Part Number	d <sub>1</sub>	d <sub>2</sub> H <sub>9</sub> Blind Bore	d <sub>3</sub>	d <sub>4</sub> Set Screw Thread	b	l <sub>1</sub>	l <sub>2</sub>	Handle ø
6MSP7	40 (1.57)	B 6 (.236)	17 (.67)	M4 x .7	13 (.51)	20 (.79)	15 (.59)	13.5 (.53)
6MSP8	50 (1.97)	B 6 (.236)	20 (.79)	M5 x .8	17 (.67)	25 (.98)	19 (.75)	13.5 (.53)
8MSP9	60 (2.36)	B 8 (.315)	23 (.91)	M5 x .8	20 (.79)	29 (1.14)	22 (.87)	16 (.63)