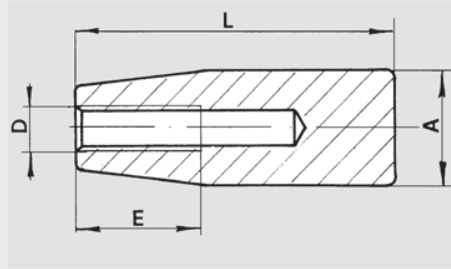


MC | Plastic Cylindrical Handles

Metric Size • With Molded-In Thread



RoHS Compliant

4

Hand knob

Black phenolic plastic (Duroplast PF)

Molded-in thread

MC cylindrical handles are mainly used on threaded shafts such as gear lever arms or as fixed grip handles.

Maximum heat resistance of phenolic plastic:
150°C (300°F).

Metric Table

Dimensions in: millimeters (*inches*)

Part Number	A	D Thread	E	L
6136002	13	M5 x .8	14	27
6136003	(.51)	M6 x 1.0	(.55)	(1.06)
6136005	17	M6 x 1.0	20	40
	(.67)		(.79)	(1.57)
6136010	17	M8 x 1.25	25	40
	(.67)		(.98)	(1.57)
6136012	21	M6 x 1.0	25	50
6136013		M8 x 1.25		
6136014		M10 x 1.5		
6136015	23	M8 x 1.25	25	55
6136020		M10 x 1.5		
6136025	25	M8 x 1.25	30	65
6136030		M10 x 1.5		
6136032		M12 x 1.75		
6136034	28	M8 x 1.25	40	85
6136035		M10 x 1.5		
6136040		M12 x 1.75		
6136042		M14 x 2.0		
6136050	29	M8 x 1.25	40	112
6136060		M12 x 1.75		

Revolving and Operating Handles