



GRUPO PEGAMO DESDE 1982



SUMINISTRO INDUSTRIAL

En Pegamo Suministro Industrial llevamos desde 1982 vendiendo, alquilando y reparando Herramienta Hidráulica, Herramienta Neumática y Herramienta Manual de las principales marcas del mercado.

Te asesoramos para que encuentres la mejor solución a las necesidades de tu empresa.

CONTACTA CON NOSOTROS

Pol. Lintzirin Gaina, B2
20180 Oiartzun.
Gipuzkoa - Spain

suministros@pegamo.es
T. 943 491 788
F. 943 371 001

> Power Team®

powerteam.com



DIGITAL PRESSURE GAUGE



**DIGITAL ACCURACY IN A SMALL
AND CONVENIENT PACKAGE**

SPXFLOW®

Order No.:

9042DG1500



► Power Team's P59L-1500G equipped with the 9042DG1500 gauge, was the perfect choice in accurately tensioning studs on a pipe flange



Key Features:

- Digital gauge is easier to read and offers better accuracy¹ than a conventional analog gauge.
- The laser welded stainless steel sensor & socket and the IP67 weatherproof rating make this product suitable for use in the most demanding of applications.
- Six pre-programmed engineering units allow technicians to read pressure in the unit of measure most applicable to the process.
- The gauge also features a bar graph display for enhanced visibility.
- Includes automatic off-battery conservation, pressure tare, minimum pressure memory and maximum pressure.
- Vibration & shock tested to MIL-STD-202G.
- Agency Compliance / Approval: RoHS, CE, ASME B40.7, UL, cUL 61010-1.
- The gauges are calibrated for life at the factory and can be certified in the field if required.



P59L-1500G & P59L-1500

- High-Pressure, two speed hand pump for an array of testing and tensioning applications.
- Pressure Range - 0 to 21,750 PSI (0 to 1,500 BAR)



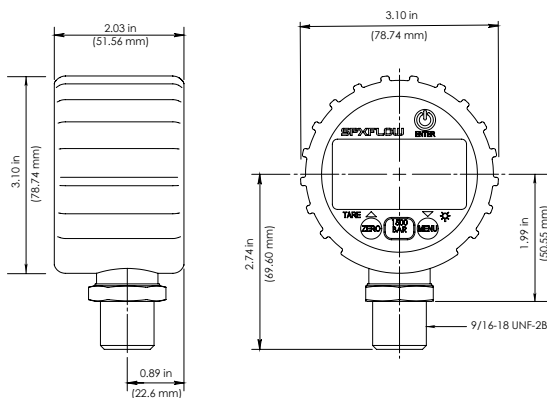
¹ Accuracy is 0.5% Full Scale, including the effects of linearity, hysteresis and repeatability. Comparison made against a 9040 analog gauge – including friction, parallax and other reading errors.

Technical Attributes



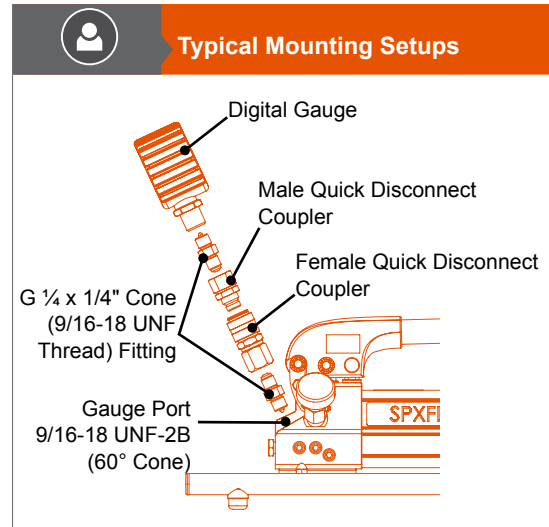
- 1 Protective rubber boot
- 2 Back-light and large 0.48" (12.2 mm) display easy reading
- 3 Displays in multiple engineering units: psi, bar, mPa, inHg, kg/cm²
- 4 Weatherproof IP67 enclosure
- 5 2,000 hr. life, (2) AA (LR6) batteries
- 6 Typical Cycle Life: 10,000,000
- 7 9/16-18 UNF-2B (High Pressure 60° cone port.)

Technical Specifications



Ordering Information

Order No.	Face Dia. in (mm)	Rated Pressure psi (bar)	Temp Range °F (°C)	Tool Use	IP Rating	Batteries Included	Battery Life hrs	F.S. Accuracy	Product Weight lb (kg)
9042DG1500	2.5 (64)	21,750 (1500)	-4 to +140 (-20 to +60)	All	IP67	2 x AA (LR6)	2,000	0.25%	0.53 (0.24)



2001772*		Male Coupling: Quick-connect, push-in male nipple. Used on 21,750 psi (1,500 bar) tensioners and pumps. G 1/4" Female Thread
2008547*		Female Coupling: Quick-connect, push-in female coupling with locking collar. Used on 21,750 psi (1,500 bar) tensioners hoses. G 1/4" Female Thread.

* Requires 2001771 Fitting

Safety Tip

When using couplers to detach the gauge, always use a metal cover (ordered separately) on the pump side (female) coupler when the gauge is removed.

Custom Scale

User programmable unit of measure allows you to set a custom scale to have the gauge display torque, force or weight to match the cylinder or tool being used.

GLOBAL CUSTOMER SERVICE CENTERS

North America Headquarters

5885 11th Street
Rockford, IL 61109
USA

Customer Service/Order Entry

Tel: +1 800 541 1418
Fax: +1 800 288 7031

Send P.O's to: info@powerteam.com

Technical Services

Tel: +1 800 477 8326
Fax: +1 800 765 8326

European Headquarters

Albert Thijsstraat 12
6471 WX Eysgelshoven
The Netherlands
Tel: +31 45 567 8877
infoeurope@powerteam.com

SEA Headquarters

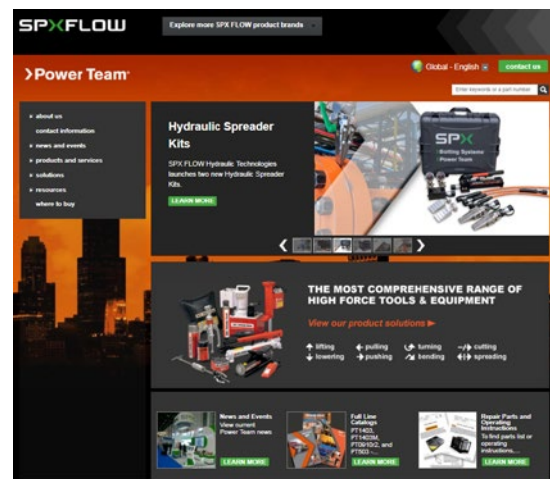
20 Pioneer Crescent #06-01
West Park BizCentral
Singapore 628555
Tel: +65 6264 4366
Fax: +65 6265 9133
infoasia@powerteam.com

China Headquarters

7F Treasury Building
1568 Huashan Road
Shanghai, 200052 China
Tel: +86 21 2208 5888
Fax: +86 21 2208 5682
infochina@powerteam.com

Australia Headquarters

Level 2, Quad 2, 6 Parkview Dr. Sydney
Olympic Park,
NSW 2127 Australia
Tel: +61 3 9589 9222



Distributed by:

SPXFLOW