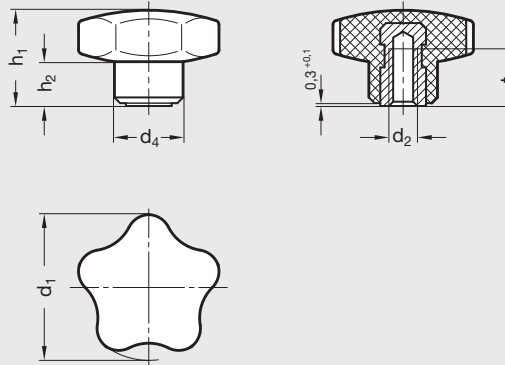
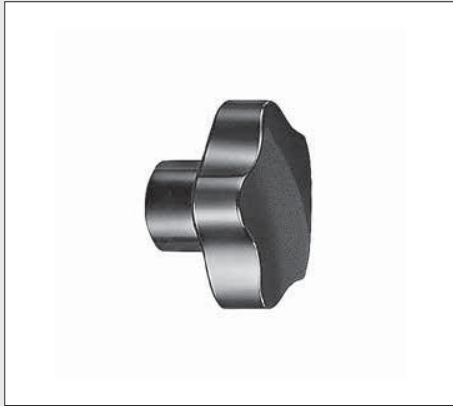


# EN 5337 | Phenolic Plastic Solid Five Lobed Knobs

Inch and Metric Size • With Tapped Insert



**elesa**®

ISO 9001 Supplier

RoHS Compliant

## Hand knob

Duroplast (phenolic) plastic, black glossy finish

## Tapped Insert

Brass, sizes 1.26" – 1.97", 32 – 85 mm;

Black oxide steel, sizes 2.36" – 3.35"; molded-in

Elesa® original design phenolic plastic solid five lobed knobs. The five-lobed shape, which offers the fingers a secure grip, is solid, so that there are no cavities where unhealthy residues may be deposited.

Resistant to solvents, oils, grease and other chemical agents. Plain blind bore available upon request.

Solid five-lobed knobs with stainless steel insert, see EN 5337-NI, page 411.

*Elesa Model VC.192*

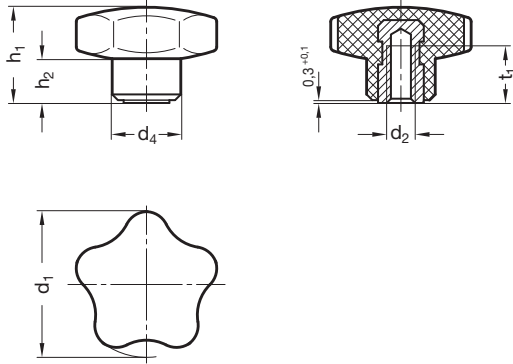
## Inch Table

Dimensions in: inches (millimeters)

Part Number	d <sub>1</sub>	d <sub>2</sub> Tapped	d <sub>4</sub>	h <sub>1</sub>	h <sub>2</sub>	t min.
3TVC1M	1.26 (32)	1/4 – 20	.75 (19)	.91 (23)	.43 (11)	.39 (10)
3TVC2M	1.57 (40)	1/4 – 20	.83 (21)	1.06 (27)	.47 (12)	.47 (12)
5TVC2M		5/16 – 18				.51 (13)
5TVC3M	1.97 (50)	5/16 – 18	.98 (25)	1.30 (33)	.55 (14)	.71 (18)
6TVC3M		3/8 – 16				.67 (17)
6TVC4	2.36 (60)	3/8 – 16	1.06 (27)	1.46 (37)	.67 (17)	.67 (17)
8TVC4		1/2 – 13				.79 (20)
8TVC5	2.76 (70)	1/2 – 13	1.18 (30)	1.73 (44)	.79 (20)	.79 (20)
10TVC6	3.35 (85)	5/8 – 11	1.38 (35)	2.13 (54)	1.18 (30)	.87 (22)

8

Clamping Knobs



**Metric Table**

Dimensions in: millimeters (inches)

Part Number	d <sub>1</sub>	d <sub>2</sub> Tapped	d <sub>4</sub>	h <sub>1</sub>	h <sub>2</sub>	t min.
6NVC1M	32 (1.26)	M6 x 1.0	19 (.75)	24 (.94)	11 (.43)	12 (.47)
6NVC2M	40 (1.57)	M6 x 1.0	21 (.83)	27 (1.06)	12 (.47)	12 (.47)
8NVC2M		M8 x 1.25				13 (.51)
8NVC3M	50 (1.97)	M8 x 1.25	25 (.98)	33 (1.30)	14 (.55)	20 (.79)
10NVC3M		M10 x 1.5				17 (.67)
10NVC4	60 (2.36)	M10 x 1.5	27 (1.06)	37 (1.46)	17 (.67)	20 (.79)
12NVC4		M12 x 1.75				17 (.67)
12NVC5	70 (2.76)	M12 x 1.75	30 (1.18)	44 (1.73)	20 (.79)	20 (.79)
16NVC6	85 (3.35)	M16 x 2.0	35 (1.38)	55 (2.17)	30 (1.18)	22 (.87)