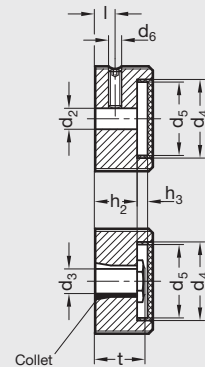
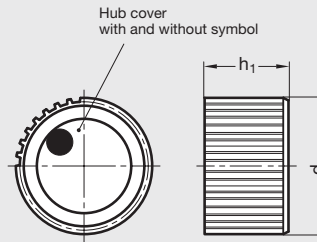
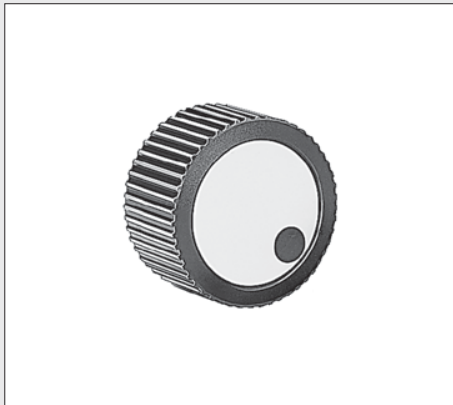


GN 726 | Aluminum Knurled Control Knobs

Metric Size • Plain Bore or Collet Type



ISO 9001 Supplier

RoHS Compliant

Body

Aluminum, black anodized

Knob cover disk

Plastic, light gray

Collet and hex nut

Brass

Socket set screw

Stainless steel with serrated end

The light gray cover makes these control knobs GN 726 very attractive.

The cover is held in place by firmly pushing it into the recess. It can be removed by inserting a screw driver into the slot provided.

Because they are made from an aluminum extrusion, manufacturing specials in existing diameters can be done at relatively low cost.

Control knobs with extension for scale ring, see GN 726.1, page 484.

Control knobs with angled scale ring, see GN 726.2, page 485.

With Plain Bore and Set Screw

Dimensions in: millimeters (inches)

Part Number		d ₁	d ₂ (H ₇) Through Bore	d ₄	d ₅	d ₆ Set Screw Thread	h ₁	h ₂	h ₃	l
Cover Disk Plain	Cover Disk with Symbol									
6MF54/N1	6MF54/M1	27 (1.06)	6	20 (.79)	18 (.71)	M4 x .7	17 (.67)	11 (.43)	4.3 (.17)	5.5 (.22)
6MF55/N1	6MF55/M1	34 (1.34)	6	25 (.98)	23 (.91)	M5 x .8	20 (.79)	14 (.55)	4.2 (.17)	7 (.28)
8MF55/N1	8MF55/M1		8							
8MF56/N1	8MF56/M1	42 (1.65)	8	32 (1.26)	30 (1.18)	M5 x .8	23 (.91)	17 (.67)	4 (.16)	8.5 (.33)
10MF56/N1	10MF56/M1	10								

With Collet and Hex Nut

Dimensions in: millimeters (inches)

Part Number		d ₁	d ₃ Through Bore	d ₄	d ₅	h ₁	h ₂	h ₃	t
Cover Disk Plain	Cover Disk with Symbol								
6ZF54/N2	6ZF54/M2	27 (1.06)	6	20 (.79)	18 (.71)	17 (.67)	11 (.43)	4.3 (.17)	14 (.55)
8ZF55/N2	8ZF55/M2	34 (1.34)	8	25 (.98)	23 (.91)	20 (.79)	14 (.55)	4.2 (.17)	17 (.67)
10ZF56/N2	10ZF56/M2	42 (1.65)	10	32 (1.26)	30 (1.18)	23 (.91)	17 (.67)	4 (.16)	20 (.79)