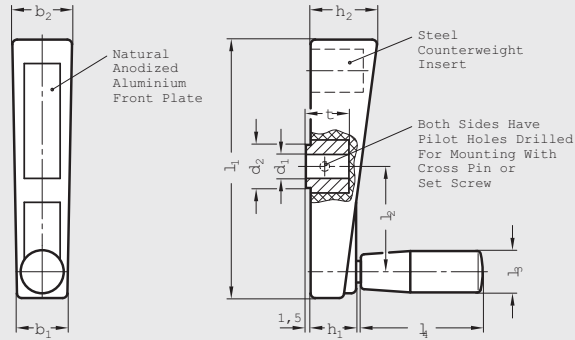


# EN 510 | Plastic Control Handles

With Blind Bore



elesa®

ISO 9001 Supplier

RoHS Compliant

## Crank body

Duroplast (phenolic) plastic, black glossy finish

## Hub

Steel, black oxide finish, molded in

## Front plate

Aluminum, matte anodized

## Revolving handle

Duroplast (phenolic) plastic, black glossy finish, with zinc-plated steel threaded stem, see GN 598-PL series for further details, page 174.

Both dimensions, inch and metric, are interchangeable

Elesa® original design phenolic plastic control handles.

Balancing obtained with incorporated counterweight.

Center already drilled for pinning to shaft. Use pins with smaller diameter than that of the hole already drilled in the plastic material to avoid local stress.

Resistant to solvents, oils, grease and other chemical agents.

Modifications such as inch and metric bores, and set screw holes available upon request.

*Elesa Model ME*

6

Crank

## Metric Table

Dimensions in: millimeters (*inches*)

Part Number	$l_1$	$d_1$ Bore	$d_2$	$b_1$	$b_2$	$h_1$	$h_2$	$l_2$	$t$ min.	$l_3$ Ø	$l_4$	Handle Thread
8SDA0	65 (2.56)	8 (.31)	14 (.55)	19 (.75)	22 (.87)	18 (.71)	23 (.91)	23 (.91)	13 (.51)	18 (.71)	40 (1.57)	M6 x 1.0
10SDA1	80 (3.15)	10 (.39)	15 (.59)	20 (.79)	24 (.94)	20 (.79)	26 (1.02)	30 (1.18)	16 (.63)	18 (.71)	40 (1.57)	M6 x 1.0
10SDA2	94 (3.70)	10 (.39)	15 (.59)	22 (.87)	26 (1.02)	22 (.87)	29 (1.14)	36 (1.42)	19 (.75)	21 (.83)	50 (1.97)	M8 x 1.25
12SDA3	110 (4.33)	12 (.47)	19 (.75)	22 (.87)	28 (1.10)	24 (.94)	34 (1.34)	44 (1.73)	18 (.71)	23 (.91)	65 (2.56)	M8 x 1.25
12SDA4	140 (5.51)	12 (.47)	19 (.75)	24 (.94)	30 (1.18)	26 (1.02)	37 (1.46)	57 (2.24)	18 (.71)	26 (1.02)	80 (3.15)	M10 x 1.5