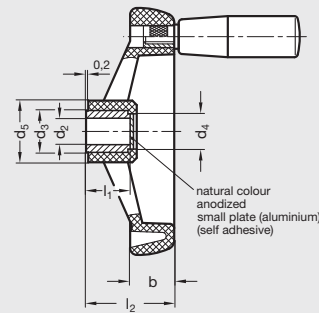
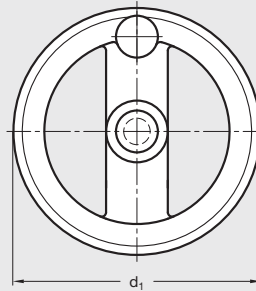


EN 522 | Plastic-Two Spoked Handwheels

Inch and Metric Size • With or without Revolving Handle



elesa®

ISO 9001 Supplier

RoHS Compliant

Handwheel body

Special high-impact strength technopolymer plastic, black matte finish

Hub: Steel, black oxide finish, molded in

Revolving handle

Technopolymer plastic hand piece with zinc-plated steel threaded spindle, GN 598-KT series

Cover disk

Aluminum, matte anodized, self-adhesive

No mounting hole in handwheel rim for handwheel without handle

Handle shipped loose; mounting of handle is required

Elesa® original design technopolymer plastic two spoked handwheels.

Ergonomically shaped rim for a safer and more comfortable grip.

Resistant to solvents, oils, grease and other chemical agents.

Countersunk washers for handwheel retention, see GN 184, page 661.

Special inch and metric bores available upon request.

Other modifications such as keyways, set screw holes, etc. available upon request.

Elesa Model VRTP + I

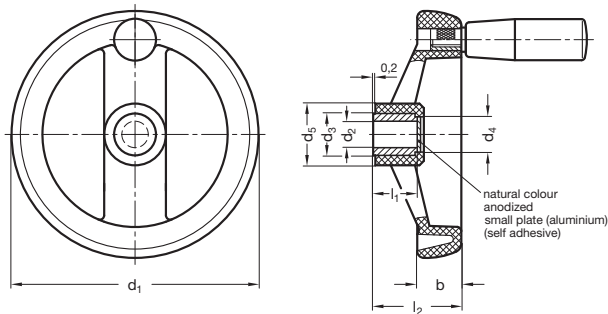
5

Handwheels

Inch Table

Dimensions in: inches (millimeters)

Part Number		d ₁	d ₂ Bore	d ₃	d ₄	d ₅	b	l ₁	l ₂	Handle Diameter	Handle Length	Handle Thread
With Handle	Without Handle											
2BEL1/D	2BEL1/A	3.15 (80)	.312	.71 (18)	.67 (17)	.91 (23)	.71 (18)	.67 (17)	1.38 (35)	.71 (18)	1.57 (40)	M6 x 1.0
3BEL2/D	3BEL2/A	3.90 (99)	.375	.71 (18)	.67 (17)	.98 (25)	.79 (20)	.67 (17)	1.46 (37)	.87 (22)	2.27 (60)	M8 x 1.25
3BEL3/D	3BEL3/A	4.88 (124)	.375	.87 (22)	.83 (21)	1.22 (31)	.87 (22)	.87 (22)	1.73 (44)	.91 (23)	2.56 (65)	M8 x 1.25
4BEL4/D	4BEL4/A	6.30 (160)	.500	1.02 (26)	.98 (25)	1.57 (40)	.98 (25)	1.06 (27)	2.01 (51)	.91 (23)	2.56 (65)	M8 x 1.25
5BEL5/D	5BEL5/A	7.87 (200)	.625	1.18 (30)	1.22 (31)	1.97 (50)	1.10 (28)	1.34 (34)	2.40 (61)	1.02 (26)	3.15 (80)	M10 x 1.5
5BEL6/D	5BEL6/A	9.84 (249)	.625	1.38 (35)	1.34 (34)	2.32 (59)	1.26 (32)	1.50 (38)	2.76 (70)	1.10 (28)	3.54 (90)	M10 x 1.5
6BEL7/D	6BEL7/A	11.73 (298)	.750	1.57 (40)	1.65 (42)	2.60 (66)	1.42 (36)	1.69 (43)	3.07 (78)	1.10 (28)	3.54 (90)	M10 x 1.5
6BEL8/D	6BEL8/A	14.67 (373)	.750	1.57 (40)	1.65 (42)	2.72 (69)	1.50 (38)	1.69 (43)	3.23 (82)	1.10 (28)	3.54 (90)	M10 x 1.5



Metric Table

Dimensions in: millimeters (inches)

Part Number		d ₁	d ₂ Bore	d ₃	d ₄	d ₅	b	l ₁	l ₂	Handle Diameter	Handle Length	Handle Thread
With Handle	Without Handle											
8MEL1/D	8MEL1/A	80	8	18	17	23	18	17	35	18	40	M6 x 1.0
10MEL1/D	10MEL1/A	(3.15)	10	(.71)	(.67)	(.91)	(.71)	(.67)	(1.38)	(.71)	(1.57)	
10MEL2/D	10MEL2/A	99	10	18	17	25	20	17	37	22	60	M6 x 1.0
12MEL2/D	12MEL2/A	(3.90)	12	(.71)	(.67)	(.98)	(.79)	(.67)	(1.46)	(.87)	(2.27)	
12MEL3/D	12MEL3/A	124	12	22	21	31	22	22	44	23	65	M8 x 1.25
14MEL3/D	14MEL3/A	(4.88)	14	(.87)	(.83)	(1.22)	(.87)	(.87)	(1.73)	(.91)	(2.56)	
14MEL4/D	14MEL4/A	160	14	26	25	40	25	27	51	23	65	M8 x 1.25
16MEL4/D	16MEL4/A	(6.30)	16	(1.02)	(.98)	(1.57)	(.98)	(1.06)	(2.01)	(.91)	(2.56)	
16MEL5/D	16MEL5/A	200	16	30	31	50	28	34	61	26	80	M10 x 1.5
20MEL5/D	20MEL5/A	(7.87)	20	(1.18)	(1.22)	(1.97)	(1.10)	(1.34)	(2.40)	(1.02)	(3.15)	
20MEL6/D	20MEL6/A	249	20	35	34	59	32	38	70	28	90	M10 x 1.5
24MEL6/D	24MEL6/A	(9.80)	24	(1.38)	(1.34)	(2.32)	(1.26)	(1.50)	(2.76)	(1.10)	(3.54)	
20MEL7/D	20MEL7/A	298	20	40	42	66	36	43	78	28	90	M10 x 1.5
26MEL7/D	26MEL7/A	(11.73)	26	(1.57)	(1.65)	(2.60)	(1.42)	(1.69)	(3.07)	(1.10)	(3.54)	
26MEL8/D	26MEL8/A	373	26	40	42	69	38	43	82	28	90	M10 x 1.5
		(14.69)		(1.57)	(1.65)	(2.72)	(1.50)	(1.69)	(3.23)	(1.10)	(3.54)	

5 Handwheels