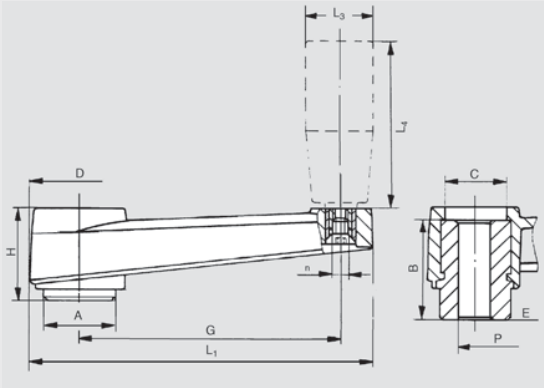


MV/PM | Plastic Crank Handles

With Stainless Steel Hub



RoHS Compliant

**Crank body**  
Matte black, glass filled nylon plastic

**Hub**  
Stainless steel, molded in

**Revolving handle**  
Black phenolic plastic with zinc plated steel threaded spindle

Both dimensions, inch and metric, are interchangeable

Crank handles MV/M are of modern design. Together with the stainless steel hub and plastic revolving handle with zinc plated steel spindle, this assembly is rust free.

Maximum heat resistance of nylon plastic crank body: 110°C (230°F).

Metric Table

Dimensions in: millimeters (inches)

Part Number	G	L <sub>1</sub>	P Through Bore	A	D	H	E	B	C	L <sub>3</sub> Ø	L <sub>4</sub>	n Thread
8300766	80 (3.15)	105 (4.13)	7.9 (.311)	22 (.87)	30 (1.18)	29 (1.13)	3 (.10)	25 (.97)	19 (.75)	21 (.83)	50 (1.97)	M6 x 1.0