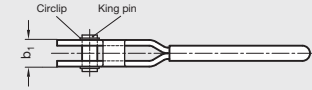
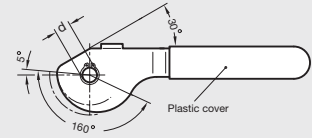




GN 917 | Double Cam Levers

Metric Size

| | |
|----------------------|-----------------------------|
| Body | Steel, black oxide finish |
| Handle Sleeve | Red plastic |
| Diameter d | .31 – .47 inch (8 – 12 mm) |
| b₁ | .51 – .79 inch (13 – 20 mm) |

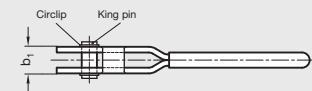
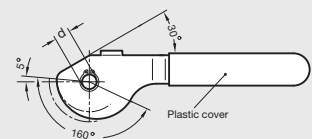


GN 917.1 | Double Cam Levers

Metric Size



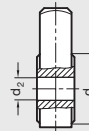
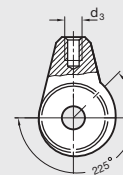
| | |
|----------------------|-----------------------------|
| Body | Stainless steel |
| Handle Sleeve | Red plastic |
| Diameter d | .31 – .47 inch (8 – 12 mm) |
| b₁ | .51 – .79 inch (13 – 20 mm) |



GN 919 | Hubs with Eccentric Cam

Metric Size

| | |
|-------------------------------|------------------------------|
| Body | Steel, plain finish |
| Diameter d₁ | .94 – 1.38 inch (24 – 35 mm) |
| Diameter d₂ | .31 – .47 inch (8 – 12 mm) |
| Thread d₃ | M6 – M10 |

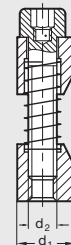


GN 928 | Shaft Clamping Units

Metric Size • For Round Shafts or Tubes



| | |
|-------------------------------|-----------------------------|
| Body | Steel, black oxide finish |
| Diameter d₁ | .31 – 1.18 inch (8 – 30 mm) |
| Thread d₂ | M4 – M16 |
| Diameter d₃ | 6 – 125 mm |



Assembly instructions

