



**GN 212 | Steel Tension Levers**

Metric Size • With Tapped Blind Bore



**Hub and arm** Steel, black oxide finish

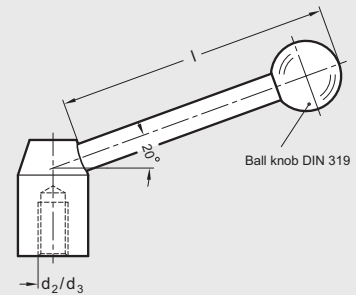


**Ball knob** Black phenolic plastic, DIN 319

**Length l** 70 – 170 mm (2.76 – 6.69 inch)

**Diameter d<sub>2</sub>** M8 – M20

**Diameter d<sub>3</sub>** 10 – 20 mm



For adjustable tension levers with female or male thread, see GN 212.3, page 60

ISO 9001 Supplier

RoHS Compliant



**GN 212-NI | Stainless Steel Tension Levers**

Metric Size • Stainless Steel • With Tapped Blind Bore



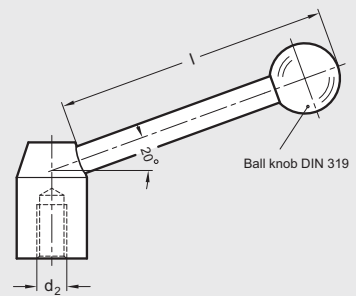
**Hub and arm** Stainless steel, matte shot blasted satin finish



**Ball knob** Black phenolic plastic, DIN 319

**Length l** 70 – 110 mm (2.76 – 4.33 inch)

**Diameter d<sub>2</sub>** M8 – M16



Stainless steel tension levers (adjustable version), see GN 212.5, page 65

ISO 9001 Supplier

RoHS Compliant



**DIN 6305 | Steel Tommy Nuts**

Metric Size • Tapped Type with Fixed Bar

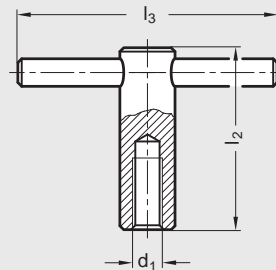
**Body** Steel, black oxide finish

**Tommy bar** Pressed in

**Length l<sub>2</sub>** 60 – 95 mm (2.36 – 3.74 inch)

**Length l<sub>3</sub>** 80 – 140 mm (3.15 – 5.51 inch)

**Diameter d<sub>1</sub>** M10 – M20



ISO 9001 Supplier

RoHS Compliant



**GN 6304 | Steel Tommy Screws**

Metric Size • Stud Type with Fixed Bar

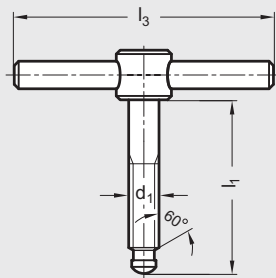
**Body** Sandblasted steel, black oxide finish

**Tommy bar** Pressed in

**Length l<sub>1</sub>** 40 – 110 mm

**Length l<sub>3</sub>** 50 – 140 mm (1.97 – 5.51 inch)

**Diameter d<sub>1</sub>** M6 – M20



Thrust pad, see DIN 6311, page 637

ISO 9001 Supplier

RoHS Compliant