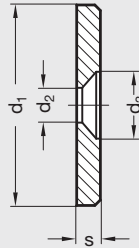
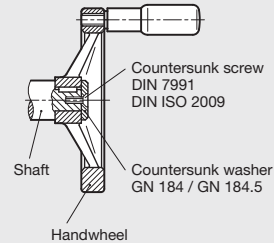


GN 184 / GN 184.5 | Countersunk Washers

Metric Size • Steel or Stainless Steel



Example of application
Fixing of a handwheel
with keyway on the shaft



ISO 9001 Supplier

RoHS Compliant

GN 184

Steel, black oxide finish

GN 184.5

Stainless steel, sandblasted, matte finish
European standard No. 1.4305
(American standard series 303)

Countersunk washers GN 184/GN 184.5 are retained to the face of the shaft end with a countersunk head screw forming a clean-look end cap.

A typical application example would be the retention of handwheels with the hub keyed to a shaft.

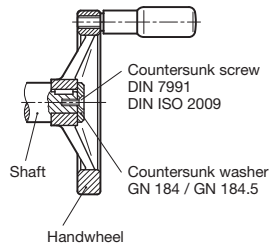
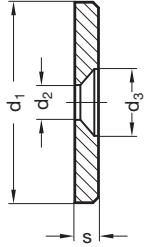
GN 184 Steel Table

Dimensions in: millimeters (*inches*)

Part Number	d ₁	d ₂	d ₃	S	Countersunk Screw Size
16WG43	16 (.63)	4.3 (.17)	8 (.31)	3 (.12)	M4
20WG43	20 (.79)	4.3 (.17)	8 (.31)	3 (.12)	M4
22WG43	22 (.87)	5.3 (.21)	10 (.39)	3.5 (.14)	M5
25WG43	25 (.98)	5.3 (.21)	10 (.39)	3.5 (.14)	M5
28WG43	28 (1.10)	5.3 (.21)	10 (.39)	3.5 (.14)	M5
32WG43	32 (1.26)	6.4 (.25)	12 (.47)	4 (.16)	M6
36WG43	36 (1.42)	6.4 (.25)	12 (.47)	4 (.16)	M6
40WG43	40 (1.57)	6.4 (.25)	12 (.47)	5 (.20)	M6
45WG43	45 (1.77)	6.4 (.25)	12 (.47)	6 (.24)	M6
52WG43	52 (2.05)	6.4 (.25)	12 (.47)	6 (.24)	M6



Example of application
Fixing of a handwheel
with keyway on the shaft



GN 184.5 Stainless Steel Table

Dimensions in: millimeters (inches)

Part Number	d ₁	d ₂	d ₃	S	Countersunk Screw Size
16WP09	16 (.63)	4.3 (.17)	8 (.31)	3 (.12)	M4
20WP09	20 (.79)	4.3 (.17)	8 (.31)	3 (.12)	M4
22WP09	22 (.87)	5.3 (.21)	10 (.39)	3.5 (.14)	M5
25WP09	25 (.98)	5.3 (.21)	10 (.39)	3.5 (.14)	M5
28WP09	28 (1.10)	5.3 (.21)	10 (.39)	3.5 (.14)	M5
32WP09	32 (1.26)	6.4 (.25)	12 (.47)	4 (.16)	M6
36WP09	36 (1.42)	6.4 (.25)	12 (.47)	4 (.16)	M6
40WP09	40 (1.57)	6.4 (.25)	12 (.47)	5 (.20)	M6
45WP09	45 (1.77)	6.4 (.25)	12 (.47)	6 (.24)	M6
52WP09	52 (2.05)	6.4 (.25)	12 (.47)	6 (.24)	M6