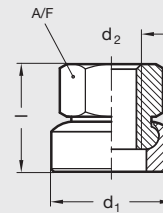




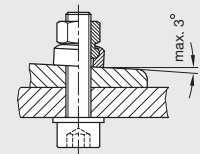
GN 347 | Swivel Hexagon Nuts

Metric Size • With Tapped Through Socket

Body	Steel, black oxide finish
Diameter d₁	.67 – 1.73 inch (17 – 44 mm)
Thread d₂	M8 – M24
Length l	.55 – 1.67 inch (14 – 42.5 mm)



Example of application



ISO 9001 Supplier

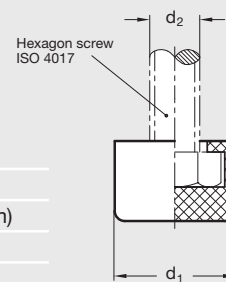
RoHS Compliant



GN 806 | Protective Caps

Metric Size • For Hex Cap Screws or With Hex Tapped Insert

Cap	Neoprene, 85 shore
Hex Insert	Steel, zinc-plated
Diameter d₁	.43 – 1.02 inch (11 – 26 mm)
Thread d₂	M4 – M12



ISO 9001 Supplier

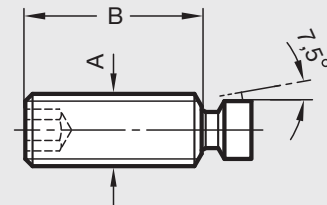
RoHS Compliant



TS | Swivel Screw Clamps

Inch Size • Steel or Delrin Pad

Body	Heat treated alloy steel
Thread A	10-32 – 1-8
Length B	.34 – .83 inch (8.6 – 21.1 mm)
Max. Load	500 – 21000 lbs



RoHS Compliant



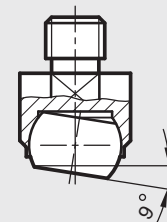
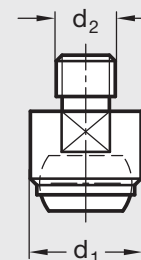
NEW



GN 709.1 | Clamping Pads

Metric Size • With Threaded Stem

Body	Steel, hardened
Diameter d₁	.51 – 1.97 inch (13 – 50 mm)
Thread d₂	M6 – M20
Max. Load	10 – 165 KN



ISO 9001 Supplier

RoHS Compliant