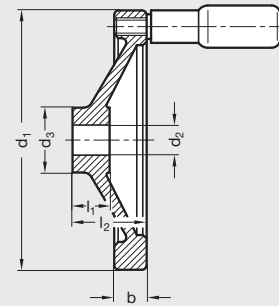
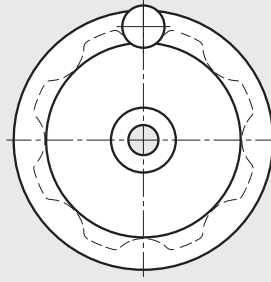


# GN 323 | Aluminum Solid Disk Handwheels

Black Powder Coated • Inch and Metric Size • With or without Revolving Handle



ISO 9001 Supplier

RoHS Compliant

5

Handwheels

## Handwheel body

Aluminum, gravity die-cast with matte black powder coated pebble finish

Contact face of hub machined

## Handwheel rim

Turned on all sides, rim is concentric and square to bore

## Revolving handle

Black nylon plastic hand piece with zinc-plated steel threaded spindle, GN 798 series

No mounting hole in handwheel rim for handwheel without handle.

Handle shipped loose; mounting of handle is required

Disk handwheels GN 323 have the same dimensions as GN 321.

A slight pebble finish provides an even finish all over.

Countersunk washers for handwheel retention, see GN 184, page 661.

Handwheels with highly polished rim, see GN 321, see page 222.

Special inch and metric bores available upon request.

Other modifications such as keyways, set screw holes, etc. available upon request.

## Inch Table

Dimensions in: inches (millimeters)

Part Number		d <sub>1</sub>	d <sub>2</sub> Through Bore	d <sub>3</sub>	b	l <sub>1</sub>	l <sub>2</sub>	Handle Diameter	Handle Thread	Handle Length
With Handle	Without Handle									
4BF11/R	4BF11/A	3.15 (80)	.500	1.02 (26)	.51 (13)	.63 (16)	1.02 (26)	.71 (18)	M6 x 1.0	1.63 (41.5)
4BF12/R	4BF12/A	3.94 (100)	.500	1.10 (28)	.55 (14)	.67 (17)	1.18 (30)	.71 (18)	M6 x 1.0	1.63 (41.5)
4BF13/R	4BF13/A	4.92 (125)	.500	1.22 (31)	.59 (15)	.71 (18)	1.30 (33)	.87 (22)	M8 x 1.25	2.32 (59)
5BF14/R	5BF14/A	5.51 (140)	.625	1.42 (36)	.65 (16.5)	.75 (19)	1.42 (36)	.94 (24)	M8 x 1.25	2.91 (74)
4BF15/R	4BF15/A	6.30 (160)	.500	1.42 (36)	.71 (18)	.79 (20)	1.54 (39)	.94 (24)	M10 x 1.5	2.91 (74)
5BF15/R	5BF15/A		.625							
5BF16/R	5BF16/A	7.87 (200)	.625	1.65 (42)	.81 (20.5)	.94 (24)	1.77 (45)	.98 (25)	M10 x 1.5	3.31 (84)
6BF16/R	6BF16/A	7.87 (200)	.750	1.77 (45)	.81 (20.5)	.94 (24)	1.77 (45)	.98 (25)	M10 x 1.5	3.31 (84)
6BF17/R	6BF17/A	9.84 (250)	.750	1.89 (48)	.91 (23)	1.10 (28)	2.01 (51)	.98 (25)	M10 x 1.5	3.31 (84)



## Metric Table

Dimensions in: millimeters (*inches*)

Part Number		d <sub>1</sub>	d <sub>2</sub> Through Bore	d <sub>3</sub>	b	l <sub>1</sub>	l <sub>2</sub>	Handle Diameter	Handle Thread	Handle Length
With Handle	Without Handle									
10MF11/R	10MF11/A	80	10	26	13	16	26	16	M6 x 1.0	41.5
12MF11/R	12MF11/A	(3.15)	12	(1.02)	(.51)	(.63)	(1.02)	(.63)		(1.63)
10MF12/R	10MF12/A	100	10	28	14	17	30	21	M6 x 1.0	56
12MF12/R	12MF12/A	(3.94)	12	(1.10)	(.55)	(.67)	(1.18)	(.83)		(2.20)
12MF13/R	12MF13/A	125	12	31	15	18	33	22	M8 x 1.25	59
		(4.92)		(1.22)	(.59)	(.71)	(1.30)	(.87)		(2.32)
14MF14/R	14MF14/A	140	14	36	16.5	19	36	24	M8 x 1.25	74
		(5.51)		(1.42)	(.65)	(.75)	(1.42)	(.94)		(2.91)
14MF15/R	14MF15/A	160	14	36	18	20	39	24	M10 x 1.5	74
		(6.30)		(1.42)	(.71)	(.79)	(1.54)	(.94)		(2.91)
18MF16/R	18MF16/A	200	18	45	20.5	24	45	25	M10 x 1.5	84
		(7.87)		(1.77)	(.81)	(.94)	(1.77)	(.98)		(3.31)
22MF17/R	22MF17/A	250	22	48	23	28	51	25	M10 x 1.5	84
		(9.84)		(1.89)	(.91)	(1.10)	(2.01)	(.98)		(3.31)