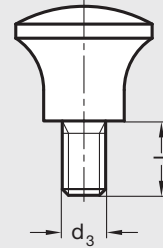
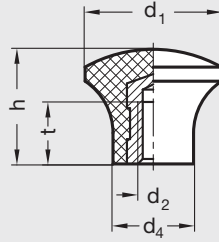


GN 76 | Plastic Mushroom Shaped Knobs

Metric Size • Tapped Insert and Threaded Stud Type



4

Revolving and Operating Handles

ISO 9001 Supplier

RoHS Compliant

Hand knob

Black phenolic plastic (Duroplast PF), glossy finish

Tapped insert

Brass, molded-in

Threaded stud

Zinc plated steel, molded-in

GN 76 waist shaped knobs are widely used on push-pull type applications. The smooth shape gives the operator a comfortable grip.

Maximum heat resistance of phenolic plastic: 110°C (230°F).

Tapped Insert Table

Dimensions in: millimeters (*inches*)

Part Number	d ₁	d ₂ Tapped	d ₄	h	t min.
5NB74/D	17 (.67)	M5 x .8	10 (.39)	14 (.55)	7 (.28)
6NB75/D	21 (.83)	M6 x 1.0	12 (.47)	17 (.67)	11 (.43)
6NB76/D	25 (.98)	M6 x 1.0	14 (.55)	21 (.83)	11 (.43)
8NB77/D	33 (1.30)	M8 x 1.25	18 (.71)	29 (1.14)	12 (.47)

Threaded Stud Table

Dimensions in: millimeters (*inches*)

Part Number	d ₁	d ₃ Thread	l Stud Length	d ₄	h
5NB74/E	17 (.67)	M5 x .8	9 (.35)	10 (.39)	14 (.55)
6NB75/E	21 (.83)	M6 x 1.0	10 (.39)	12 (.47)	17 (.67)
6NB76/E	25 (.98)	M6 x 1.0	10 (.39)	14 (.55)	21 (.83)
8NB77/E	33 (1.30)	M8 x 1.25	14 (.55)	18 (.71)	29 (1.14)