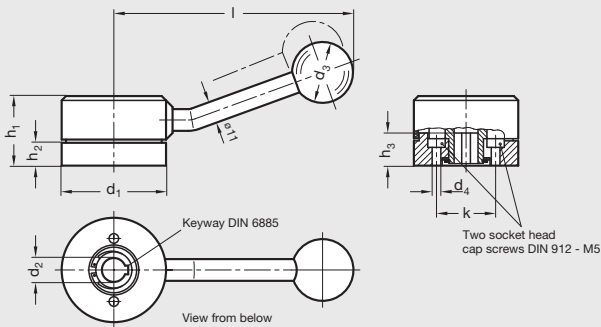


GN 215 | Steel Indexing Levers

Metric Size • With or without Serrations



ISO 9001 Supplier    RoHS Compliant

- Body and handle**  
Steel, black oxide finish
- Cover disk**  
Light gray plastic
- Ball knob**  
Black phenolic plastic, DIN 319 series

With indexing levers GN 215, shafts can be turned through a predetermined angle and positively locked. To index, lift the lever against spring pressure from serrations (one hand control). Available with or without serrations. Version with 30 serrations has 12° angle per serration. Limiting the indexing angle can be achieved with two dowels, see above drawing. The bushing is connected to the shaft via a keyway.

The location flange is bolted to the machine with two socket head cap screws DIN 912 – M5. The lever, via the location pins, provides the connection between shaft and location flange. The serrations are protected from debris by the cover. This cover can be inserted by hand (elastic segments engage into a groove) and removed with a screwdriver. See also technical and assembly instructions, see next page.

9

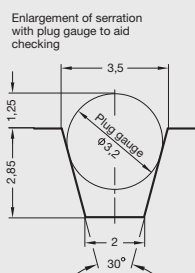
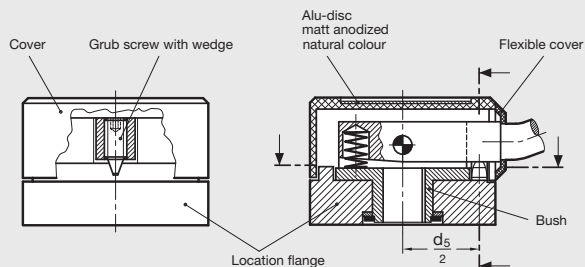
Control Knobs

Metric Table

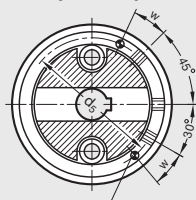
Dimensions in: millimeters (inches)

Part Number		d <sub>1</sub>	d <sub>2</sub> (H <sub>7</sub> ) Bore with keyway	d <sub>3</sub>	d <sub>4</sub>	d <sub>5</sub> (see next page)	h <sub>1</sub>	h <sub>2</sub>	h <sub>3</sub> max shaft length	k	l	Arm Disengage Tol. w+0.5°
Without Serrations	With 30 Serrations											
10KF67/A	10KF67/B	54	K10	32	5.2	44.5	37	13	16.5	30	122	22°
12KF67/A	12KF67/B	(2.13)	K12	(1.26)	(.20)	(1.75)	(1.46)	(.51)	(.65)	(1.18)	(4.80)	
14KF68/A	14KF68/B	60	K14	32	5.2	50	39	15	18.5	36	125	19°
16KF68/A	16KF68/B	(2.36)	K16	(1.26)	(.20)	(1.97)	(1.54)	(.59)	(.73)	(1.42)	(4.92)	

## Specification Information



Example with three serrations and 2 dowels restricting the index angle



Dowel pin  $\varnothing 3.5 \times 7$  mm protruding (only applicable when restricted indexing angle is required). w = angle from serration (lever position).

The location pin is a wedge-type as standard, which guarantees backlash-free positioning and also achieving easy engagement and disengagement.

Special serrations and dowel pins which restrict the indexing angle can be produced to customers requirement. Please ask for a quotation.

If backlash-free positioning is not required, a dowel pin (made from a grub screw) can be used. The serrations can be made square or with dowels and suitable holes. Such holes have to be made large enough to ensure that the dowel is not restricted on engagement (lever swivel radius).

Smallest available angle for special serrations:

Size 54 11°

Size 60 9°

Smaller angles can be achieved with suitable serrations and dowels. Milling cutter for standard serrations can be supplied.