

Ordering Information

Tool Ref	Metric	Required Thread Protrusion	Stroke	Max Load	Hyd Area	Weight
WDD1-M30	M30	63 - 70 mm	7 mm	467 kN	3458 sq.mm	6.70 kg
WDD2-M33	M33	67 - 74 mm	7 mm	569 kN	4215 sq.mm	7.60 kg
WDD3-M36	M36	71 - 80 mm	10 mm	671 kN	4970 sq.mm	9.25 kg
WDD4-M39	M39	72 - 86 mm	10 mm	801 kN	5931 sq.mm	11.10 kg
WDD5-M42	M42	80 - 92 mm	10 mm	926 kN	6856 sq.mm	12.60 kg
WSD1-M30	M30	63 - 81 mm	7 mm	467 kN	3458 sq.mm	6.60 kg
WSD2-M33	M33	67 - 86 mm	7 mm	569 kN	4215 sq.mm	7.60 kg
WSD3-M36	M36	71 - 93 mm	10 mm	671 kN	4970 sq.mm	8.80 kg
WSD4-M39	M39	72 - 95 mm	10 mm	801 kN	5931 sq.mm	11.20 kg
WSD5-M42	M42	80 - 96 mm	10 mm	926 kN	6856 sq.mm	12.20 kg

for twin hydraulic couplings ( for multiple tool connection) add 'TC' after part number  
for cycle counter option, add 'A' after code (eg. WDD1-M30A, WDD1-M30TCA)

FOR GRADE 75 ksi ALL THREAD FOUNDATION BOLTS

Load Cell	Adaptor Kit**	Bar Size	Stroke	Max Load	Hyd Area	Weight
WSS1	WSS1-10	#10	10 mm	470 kN	3481 sq.mm	5.74 kg
	WSS1-11	#11	10 mm	470 kN	3481 sq.mm	5.85 kg
WSL1	WSL1-10	#10	25 mm	470 kN	3481 sq.mm	9.00 kg
	WSL1-11	#11	25 mm	470 kN	3481 sq.mm	9.20 kg

\*\* for manual nut rotation Adaptor Kit add "M" after part number, for gearbox style nut rotation add "GB"

FOR GRADE 150 ksi ALL THREAD FOUNDATION BOLTS

Load Cell	Adaptor Kit**	Bar Size	Stroke	Max Load	Hyd Area	Weight
WSS2	WSS2-125	1-1/4"	10 mm	760 kN	5630 sq.mm	8.20 kg
	WSS2-138	1-3/8"	10 mm	760 kN	5630 sq.mm	8.30 kg
WSL2	WSL2-125	1-1/4"	25 mm	760 kN	5630 sq.mm	12.30 kg
	WSL2-138	1-3/8"	25 mm	760 kN	5630 sq.mm	12.40 kg

\*\* for manual nut rotation Adaptor Kit add "M" after part number, for gearbox style nut rotation add "GB"

SALES, SERVICE AND RENTAL CENTERS



WD/WS



WIND TENSIONERS



WIND TENSIONERS

Our tensioners have quality designed in with standard features that enhance durability and efficiency to get the job done faster and safer:

Quality Means Lower Life-Cycle Costs:

- Achieves 90% proof load requirement for ISO 898 Grade 10.9 bolts
- Fully enclosed load cell eliminates debris in piston retraction mechanism
- Auto-Engaging Geared Nut Rotator
- Self-energizing, long life seals

Enhanced Usability:

- Piston Stroke Indicator
- High pressure swivel coupling (optional on WSS & WSL)
- 1350 Bar maximum operating pressure
- Automatic piston retraction mechanism

Designed with Safety in Mind:

- Overstroke prevention for safe operation
- Anti-slip grip surface



WIND TENSIONERS

Specifications and Dimensional Data



WDD Series:  
Up Tower

- Robust Gearbox Drive
- Auto-Engaging Geared Nut Rotator
- Small diameter, high load 2-Stage hydraulic load cell
- Fast application using 1/2" drive
- Cycle counter (optional)



WSD Series:  
Compact Tower

- Robust Gearbox Drive
- Auto-Engaging Geared Nut Rotator
- Low height hydraulic load cell
- Fast application using 1/2" drive
- Cycle counter (optional)

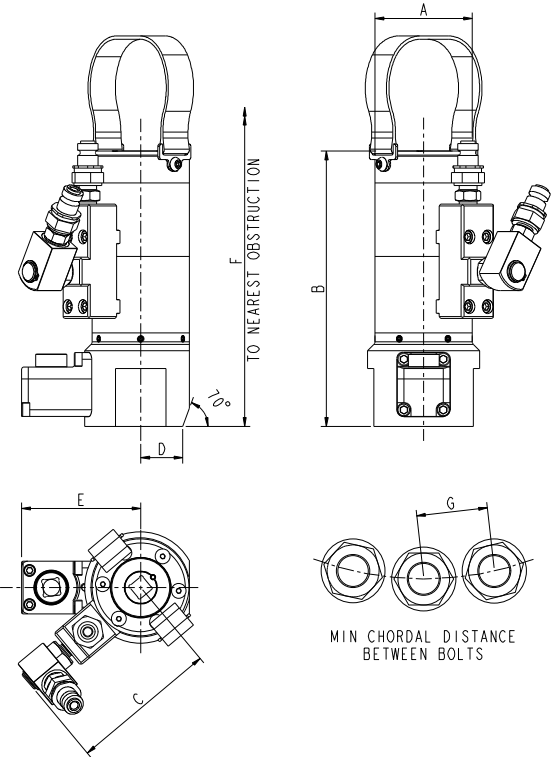


WSS & WSL Series:  
Foundation

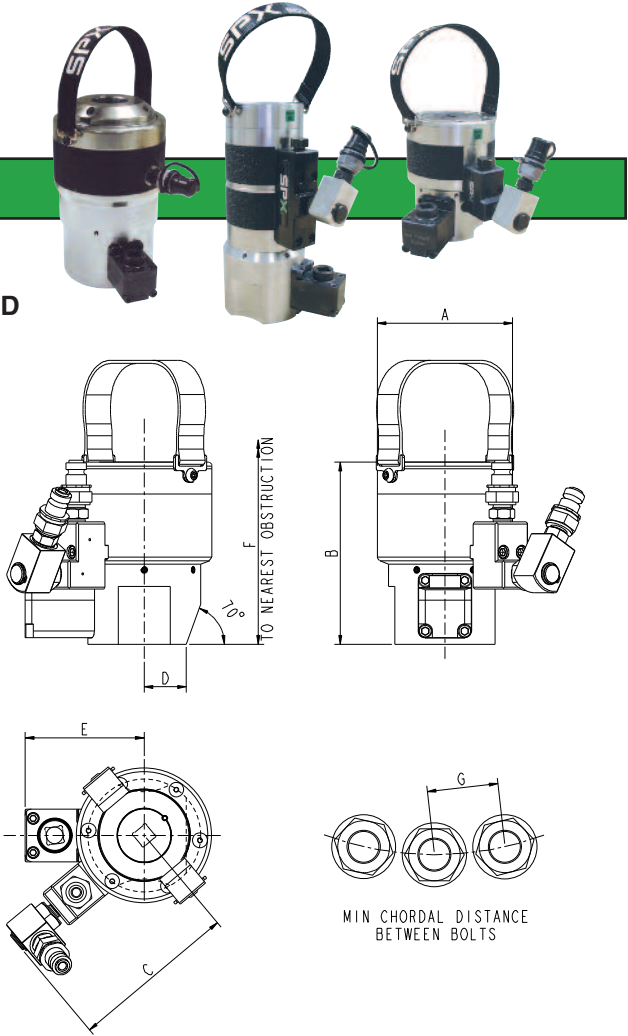
- Suitable for ISO Metric threaded and all-thread bars
- Geared or Manual Nut Rotator
- Long & Short Stroke models
- High pressure swivel coupling (optional)

Tool Ref	A	B	C	D	E	F	G	H
WDD1-M30	74 mm	210 mm	112 mm	37 mm	91 mm	290 mm	64 mm	-
WDD2-M33	79 mm	214 mm	115 mm	39.5 mm	93 mm	298 mm	70 mm	-
WDD3-M36	85 mm	239 mm	117 mm	42.5 mm	96 mm	332 mm	76 mm	-
WDD4-M39	92 mm	249 mm	121 mm	46 mm	99 mm	348 mm	79 mm	-
WDD5-M42	98 mm	255 mm	124 mm	49 mm	102 mm	360 mm	90 mm	-
WSD1-M30	103 mm	138 mm	127 mm	32 mm	91 mm	211 mm	68 mm	-
WSD2-M33	112 mm	140 mm	132 mm	35 mm	93 mm	218 mm	74 mm	-
WSD3-M36	122 mm	149 mm	136 mm	37 mm	96 mm	233 mm	82 mm	-
WSD4-M39	133 mm	153 mm	142 mm	42 mm	99 mm	238 mm	88 mm	-
WSD5-M42	140 mm	157 mm	146 mm	45 mm	102 mm	250 mm	93 mm	-
WSS1/WSS1-10	103 mm	158 mm	98 mm	42 mm	99 mm	-	103 mm	206 mm
WSS1/WSS1-11	103 mm	158 mm	98 mm	42 mm	99 mm	-	103 mm	219 mm
WSL1/WSL1-10	114 mm	205 mm	103 mm	42 mm	99 mm	-	103 mm	255 mm
WSL1/WSL1-11	114 mm	205 mm	103 mm	42 mm	99 mm	-	103 mm	266 mm
WSS2/WSS2-125	119 mm	168 mm	105 mm	42 mm	102 mm	-	112 mm	226 mm
WSS2/WSS2-138	119 mm	168 mm	105 mm	42 mm	102 mm	-	112 mm	238 mm
WSL2/WSL2-125	129 mm	211 mm	110 mm	42 mm	102 mm	-	112 mm	269 mm
WSL2/WSL2-138	129 mm	211 mm	110 mm	42 mm	102 mm	-	112 mm	280 mm

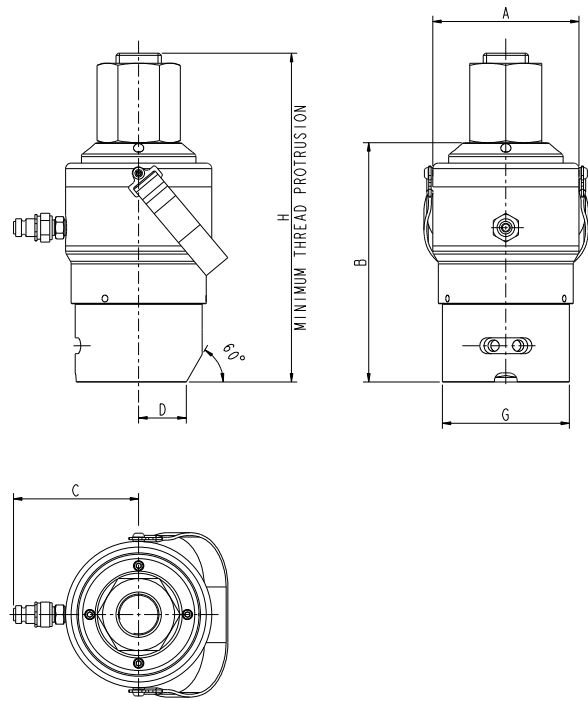
WDD



WSD



WSS-WSL Manual Nut Rotation Version



WSS-WSL Gearbox Nut Rotation Version

